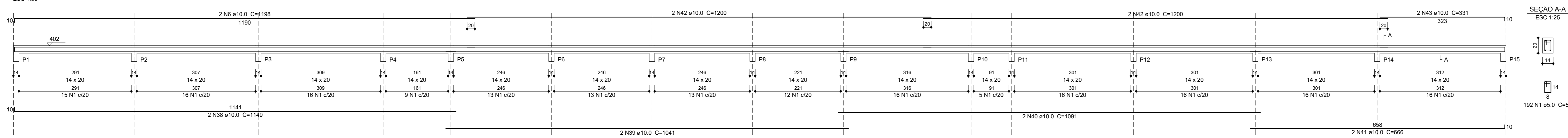
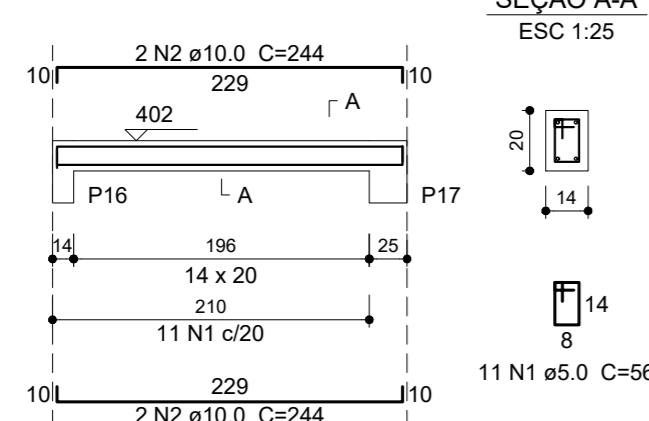


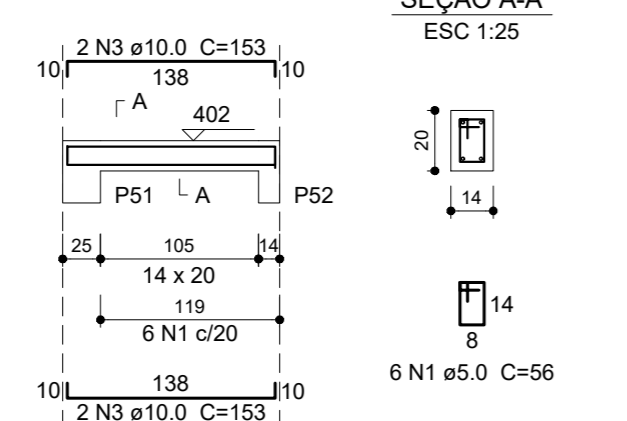
V1 (14 x 20)



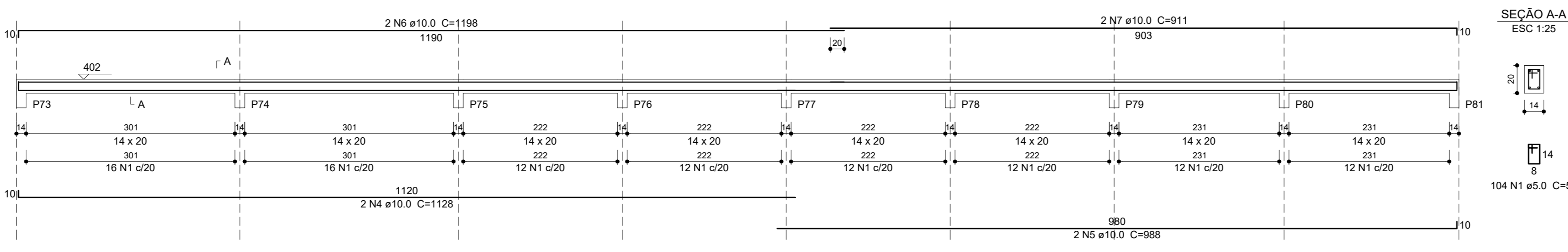
V2 (14 x 20)



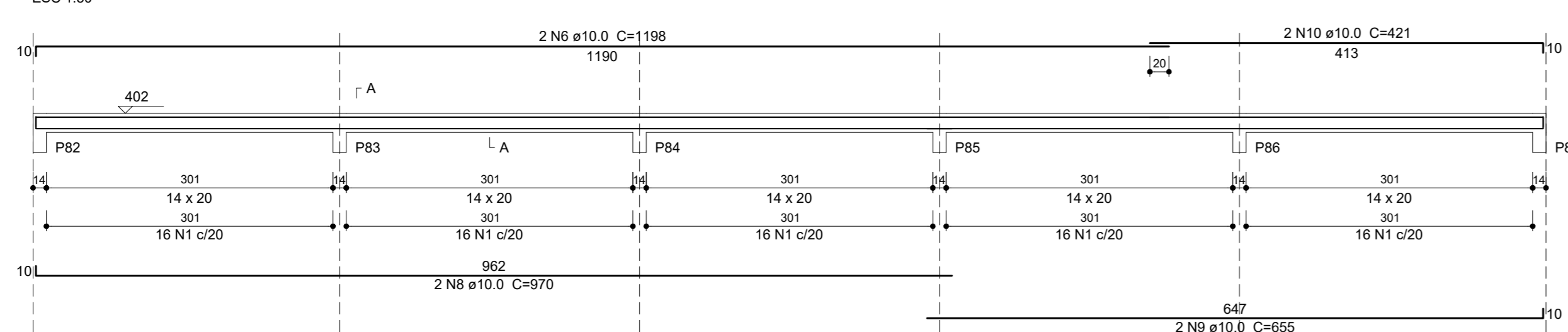
V3 (14 x 20)



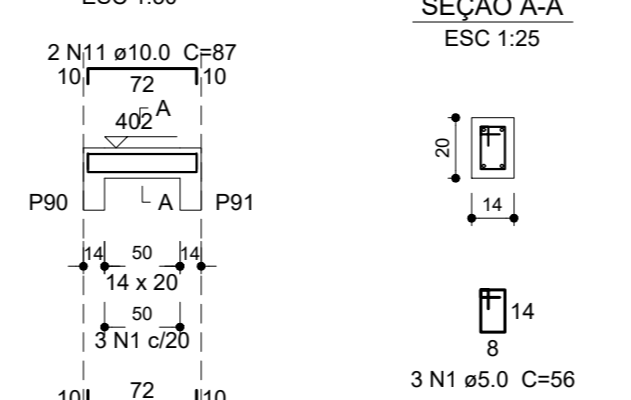
V4 (14 x 20)



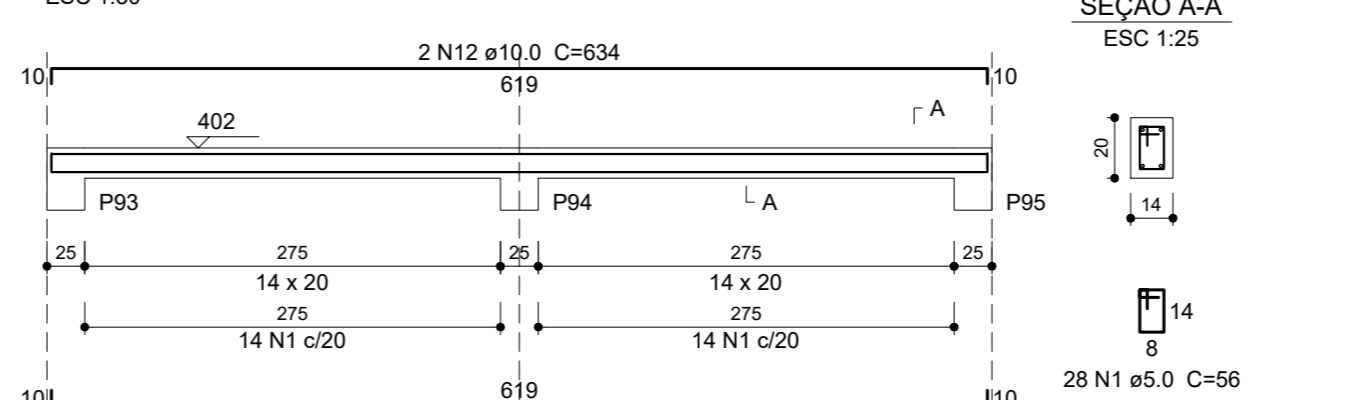
V5 (14 x 20)



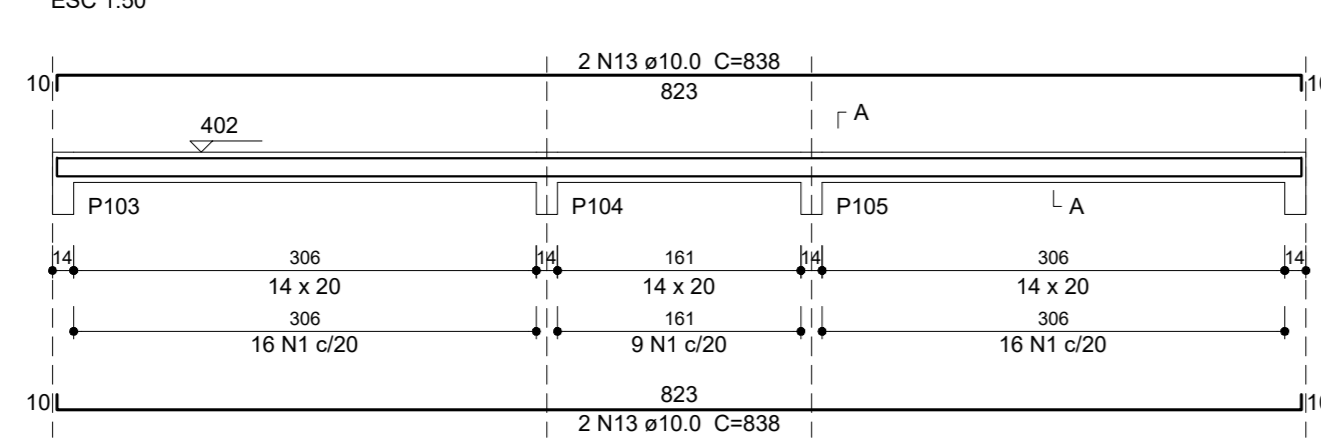
V6 (14 x 20)



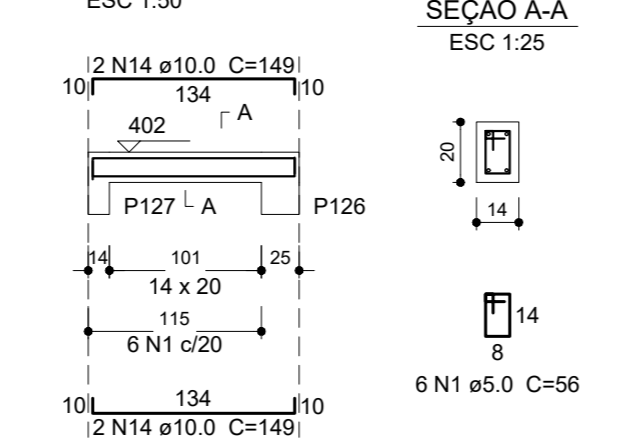
V7 (14 x 20)



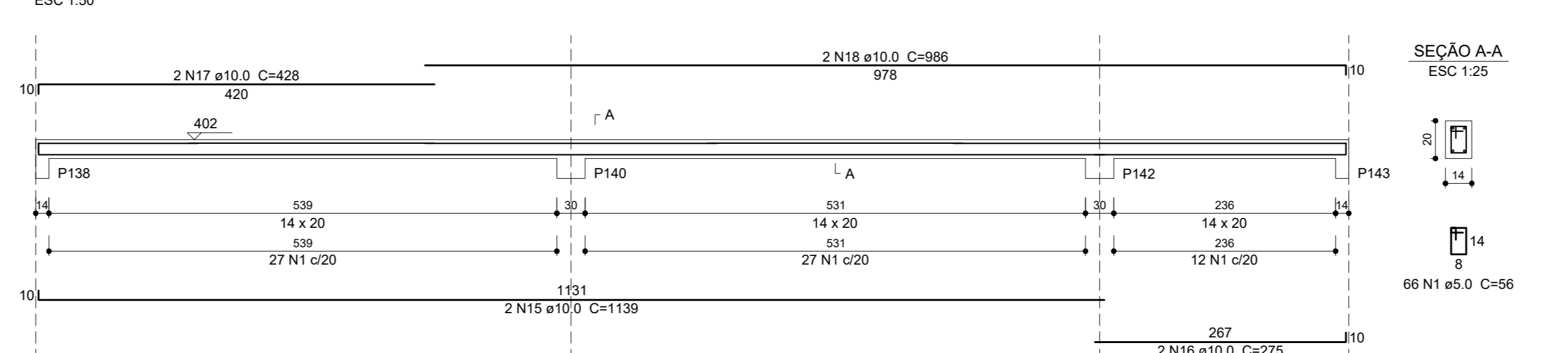
V8 (14 x 20)



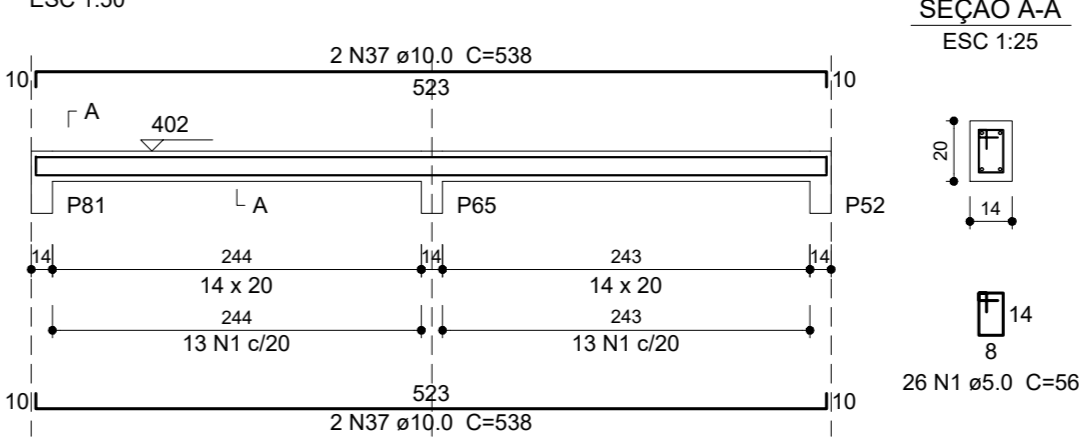
V9 (14 x 20)



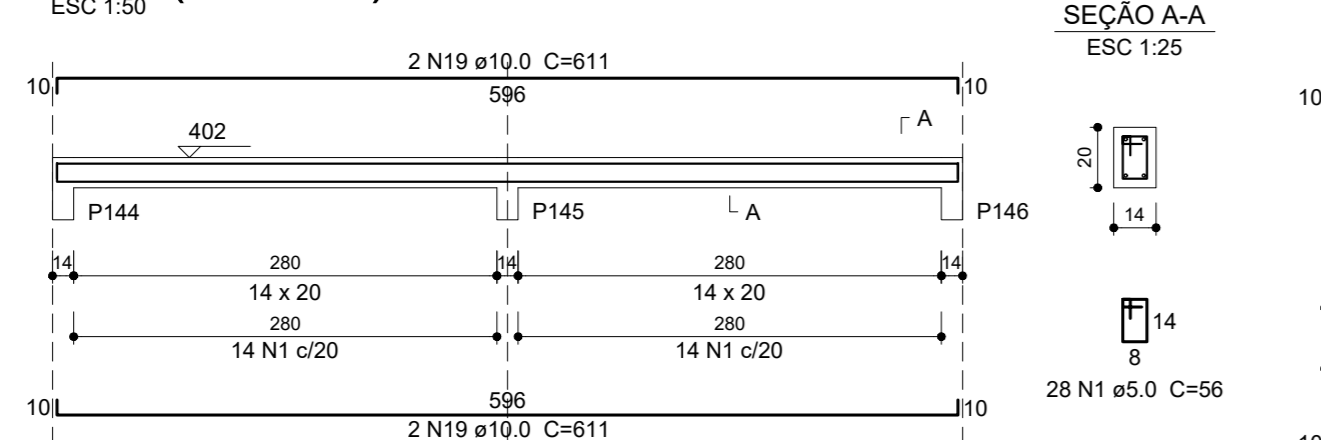
V10 (14 x 20)



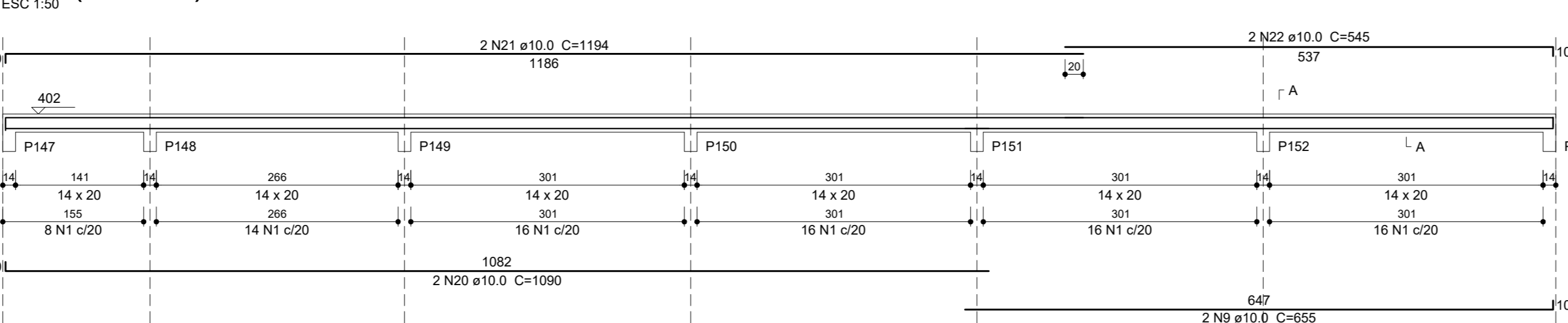
V24 (14 x 20)



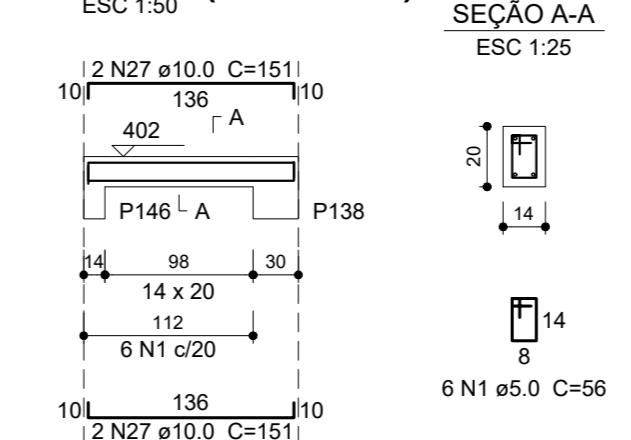
V11 (14 x 20)



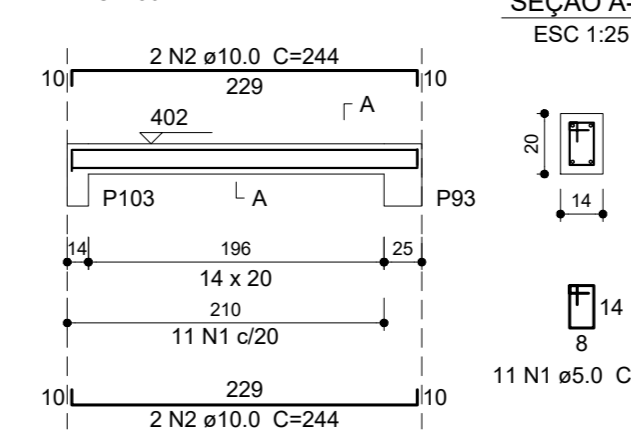
V12 (14 x 20)



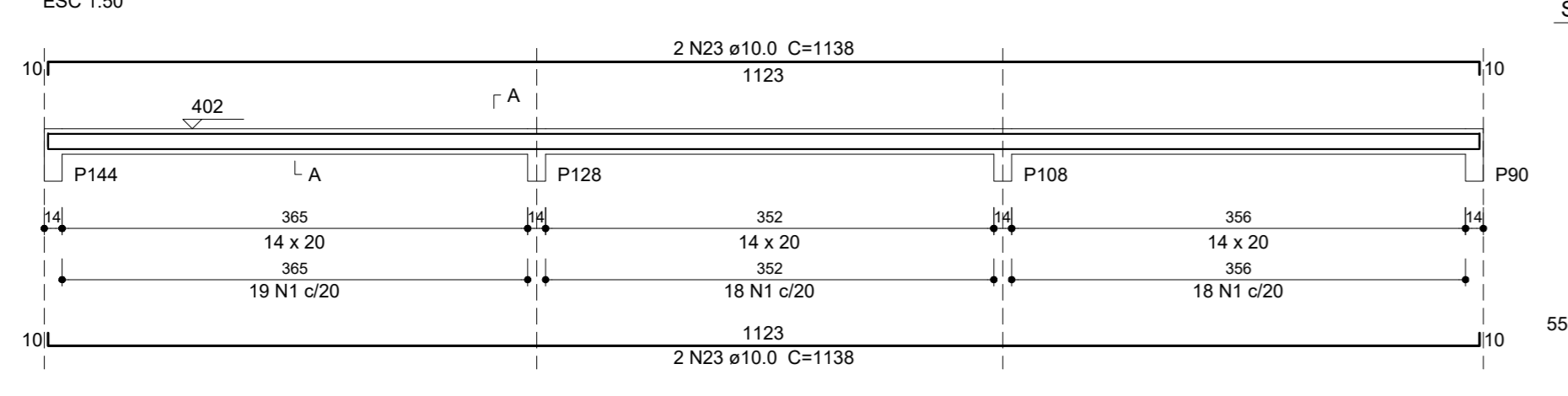
V15 (14 x 20)



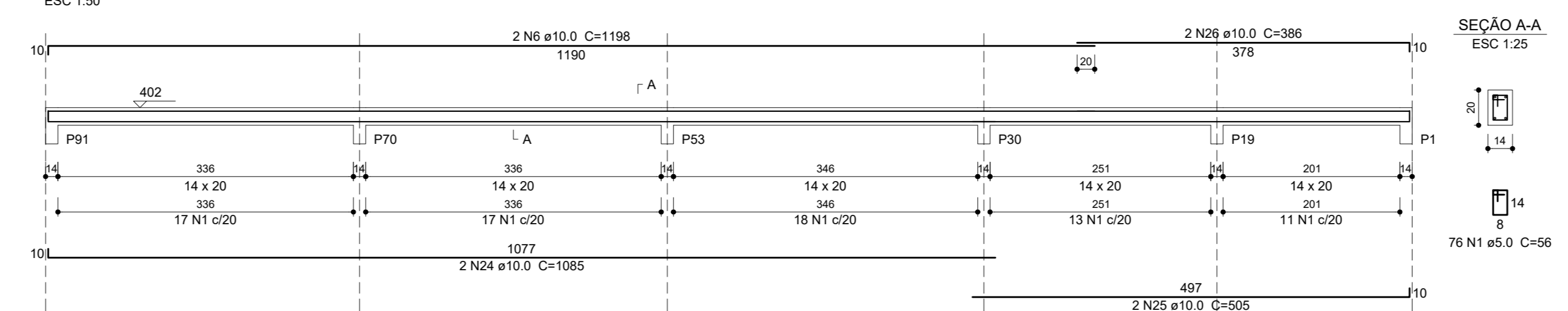
V16 (14 x 20)



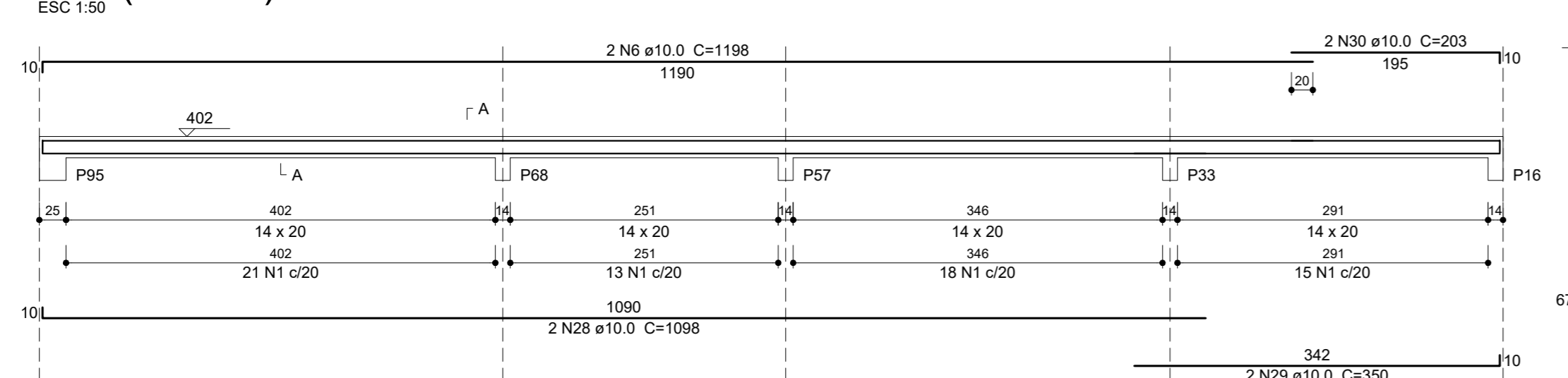
V13 (14 x 20)



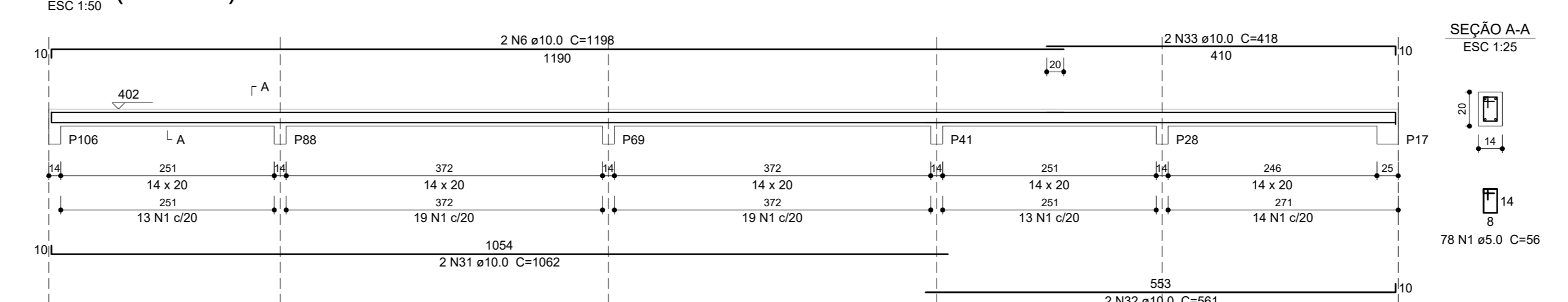
V14 (14 x 20)



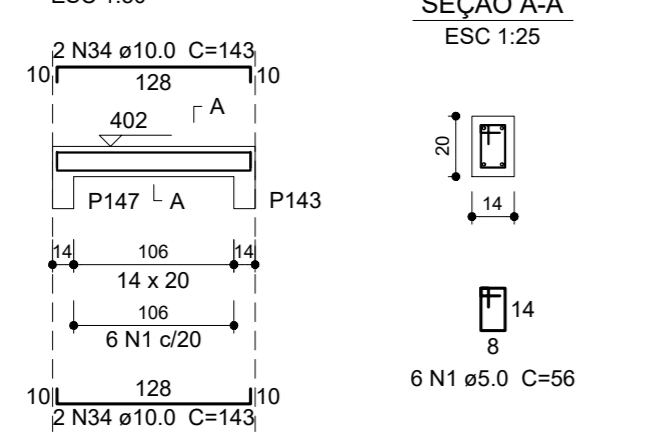
V17 (14 x 20)



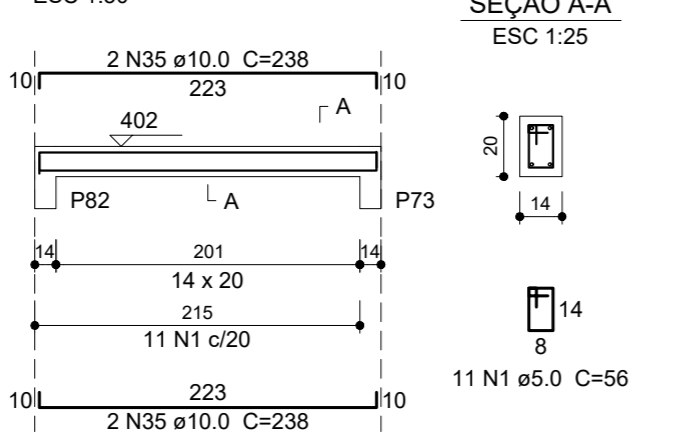
V18 (14 x 20)



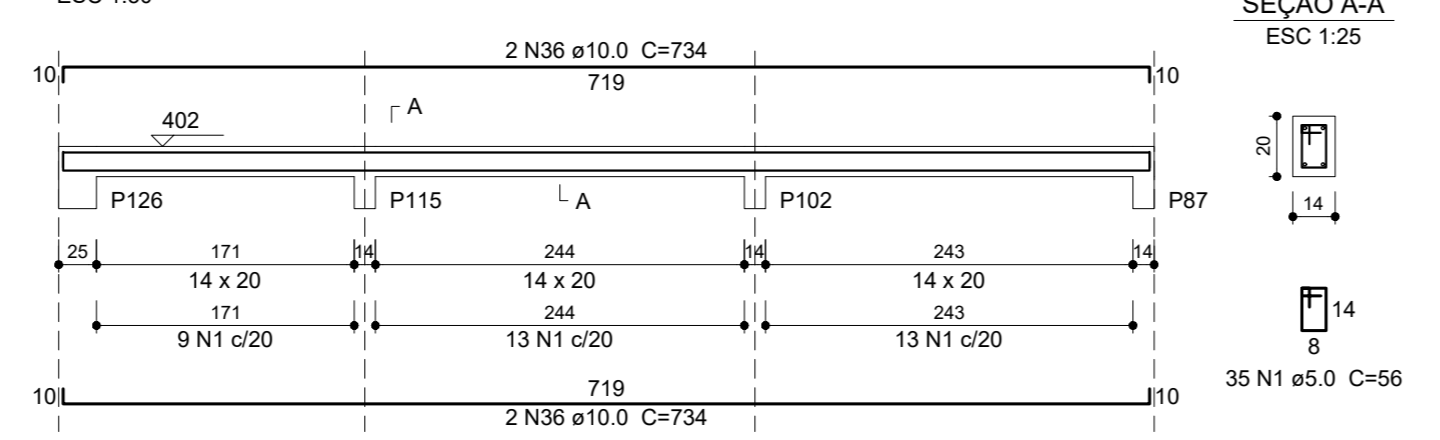
V19 (14 x 20)



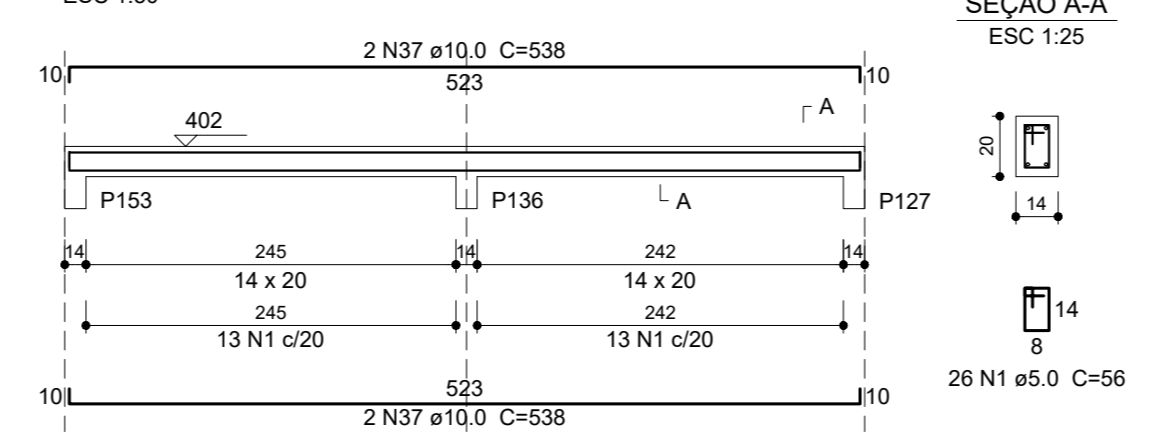
V20 (14 x 20)



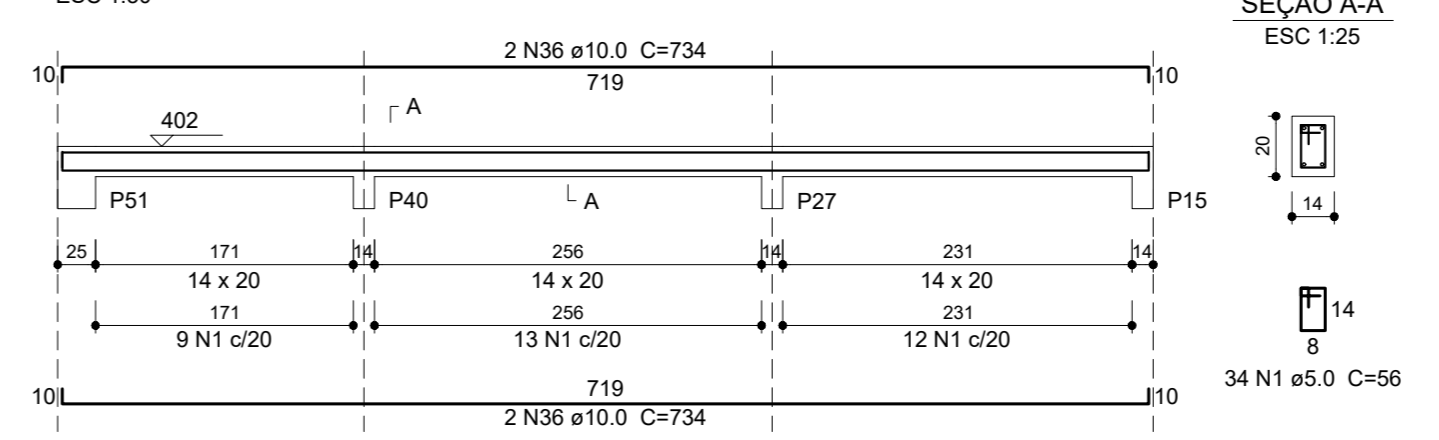
V21 (14 x 20)



V22 (14 x 20)



V23 (14 x 20)



Relação do aço - PLATIBANDA

V22	N	DIAM (mm)	QUANT	C.TOTAL (cm)	C.TOTAL (cm)
CABO	1	5.0	1082	56	6052
CABO	2	10.0	8	244	1952
	3	10.0	4	153	612
	4	10.0	2	1126	2236
	5	10.0	2	988	1976
	6	10.0	12	1198	14376
	7	10.0	2	911	1822
	8	10.0	2	970	1840
	9	10.0	4	655	2620
	10	10.0	2	421	842
	11	10.0	4	87	348
	12	10.0	4	634	2536
	13	10.0	4	838	3352
	14	10.0	4	149	596
	15	10.0	2	1139	2278
	16	10.0	2	275	550
	17	10.0	2	428	856
	18	10.0	2	986	1972
	19	10.0	4	811	3244
	20	10.0	2	1060	2120
	21	10.0	2	1194	2388
	22	10.0	2	545	1090
	23	10.0	4	1138	4552
	24	10.0	2	1085	2170
	25	10.0	2	525	1050
	26	10.0	2	385	772
	27	10.0	4	151	604
	28	10.0	2	1098	2196
	29	10.0	2	350	700
	30	10.0	2	203	406
	31	10.0	2	1052	2104
	32	10.0	2	561	1122
	33	10.0	2	418	836
	34	10.0	4	143	572
	35	10.0	4	238	952
	36	10.0	8	734	5872
	37	10.0	8	538	4304
	38	10.0	2	1149	2298
	39	10.0	2	1041	2082
	40	10.0	2	1091	2182
	41	10.0	2	666	1332
	42	10.0	4	1200	4800
	43	10.0	2	331	662

Resumo do aço

ADO	DIAM (mm)	C.TOTAL (m)	PESO - 10 kg
CABO	10.0	905.4	614
CABO	5.0	406	102.7
PESO TOTAL (kg)			716.7

Características dos materiais (CONCRETO)				Legenda	
Elemento	f _{ck} (MPa)	f _{ctd} (MPa)	Agregado		Barra que não
Estacas	25	241500	Brita 1		Barra que passa
Blocos	30	268384	Brita 1		Barra que nasce
Vigas	30	268384	Brita 1		Viga
Placas	30	268384	Brita 1		Viga chata ou invertida

CARGAS ACIDENTAIS NAS LAJES			
4			
3			
2			
1			
0			

Observações	
nr°	data por

		ADILSON JOSÉ DE CARVALHO Engenheiro Civil - CREA 0600618483 R. Sérgio Antunes Antunes, 550 - 13.612-332 - LEME, SP adilson.carvalho100@gmail.com (19) 89128 6863	
OBRAS CENTRO DE TRATAMENTO AO AUTISMO		E-12	
Assunto: Prefeitura Municipal de Leme Secretaria de Obras e Planejamento Urbano Vigas da Platibanda			
Arquiteta: Pedro Luiz Traldi - CAU 134056-5		R.: JOSÉ SILVESTRE DE CARVALHO s/n - VILA BANCÁRIA - LEME/SP	
Escala: 1:25 e 1:50		Data: 04/jul/2022	