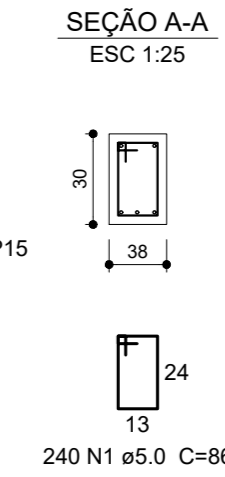
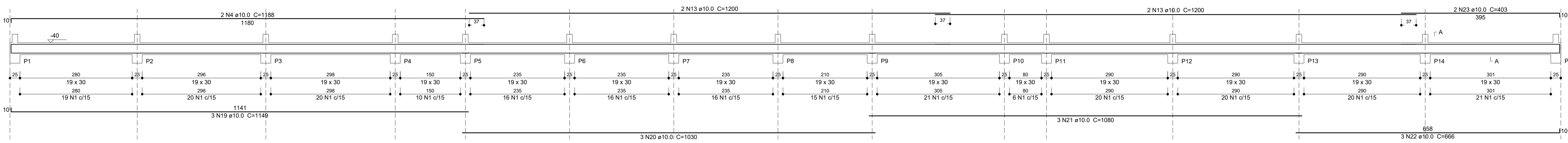
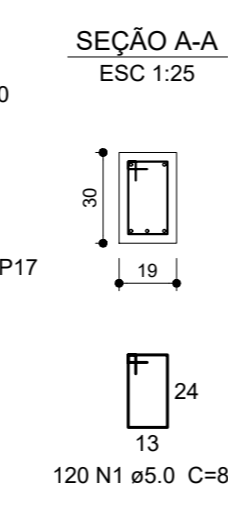
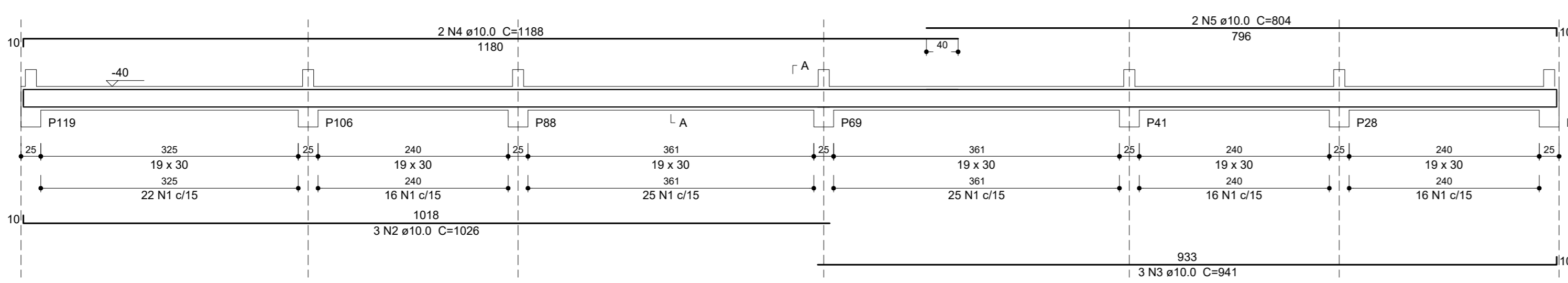


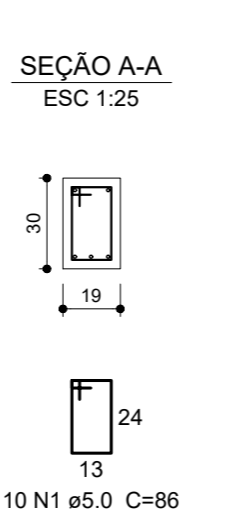
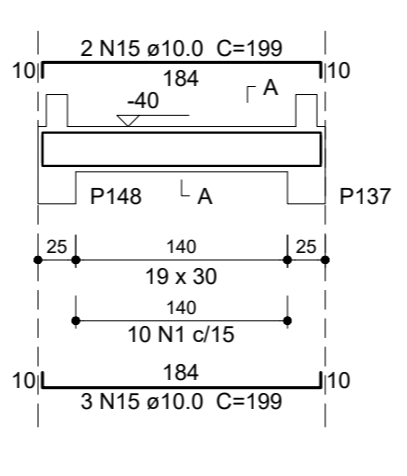
V1 (19 x 30)
ESC 1:50



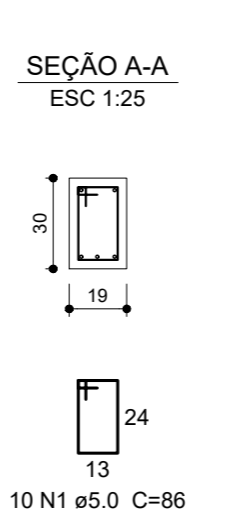
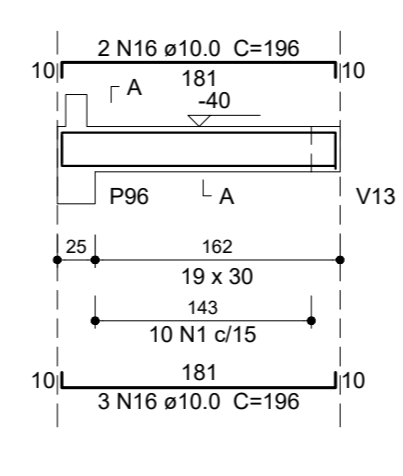
V38 (19 x 30)
ESC 1:50



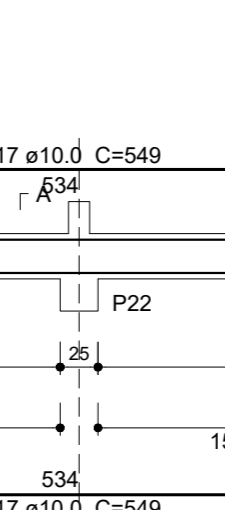
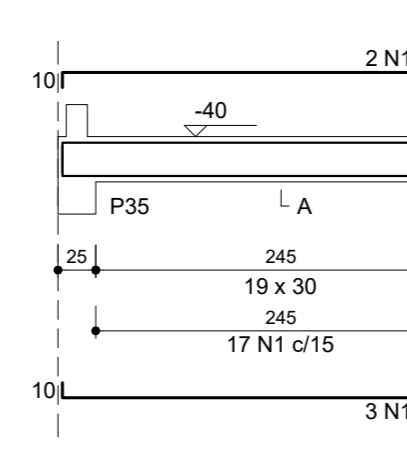
V41 (19 x 30)
ESC 1:50



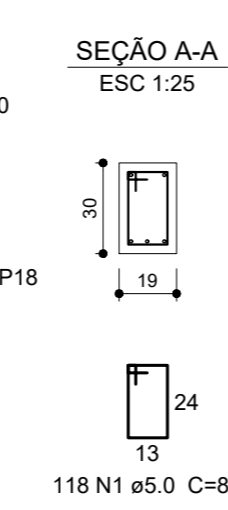
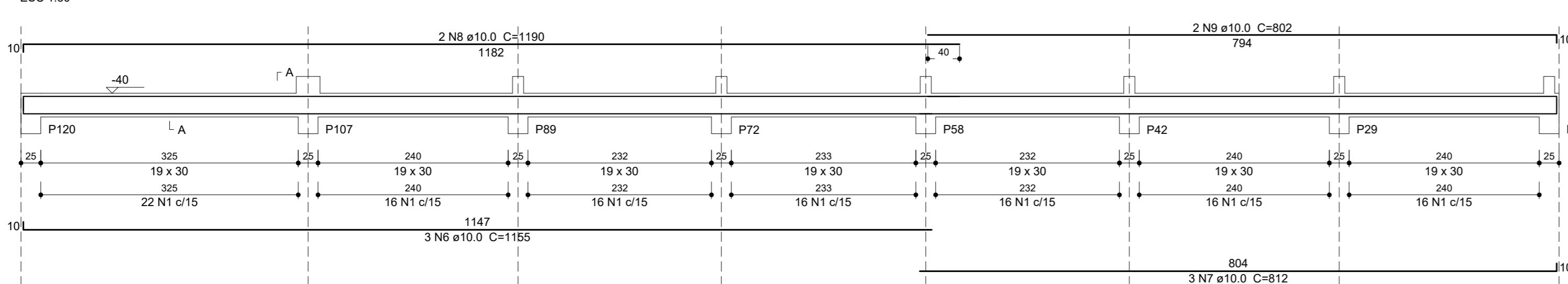
V42 (19 x 30)
ESC 1:50



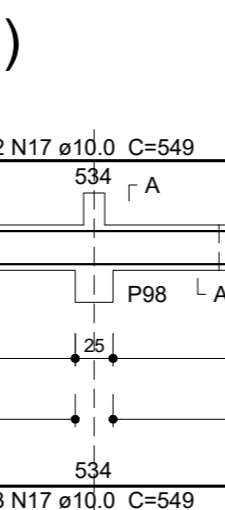
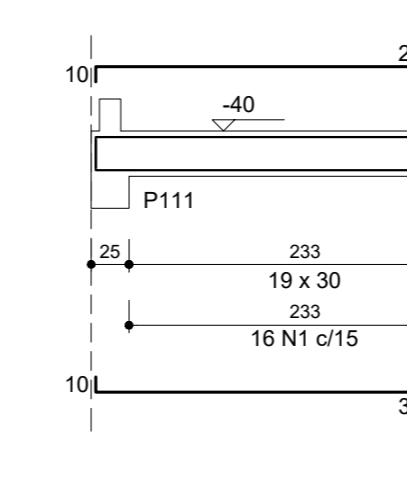
V43 (19 x 30)
ESC 1:50



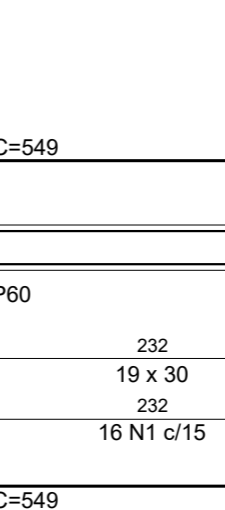
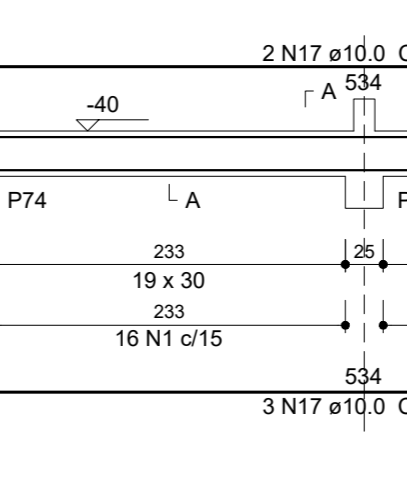
V39 (19 x 30)
ESC 1:50



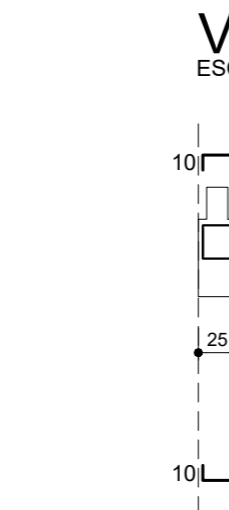
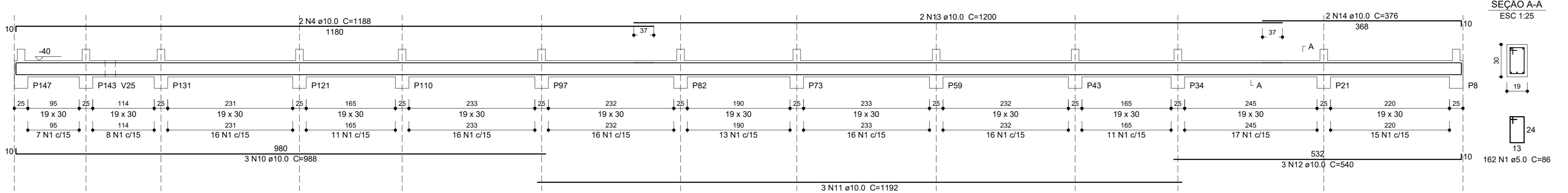
V44 (19 x 30)
ESC 1:50



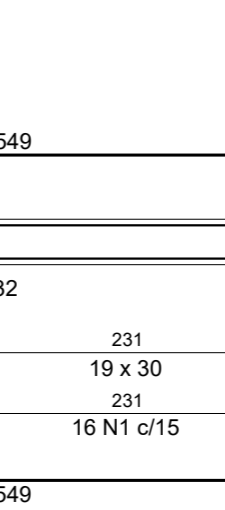
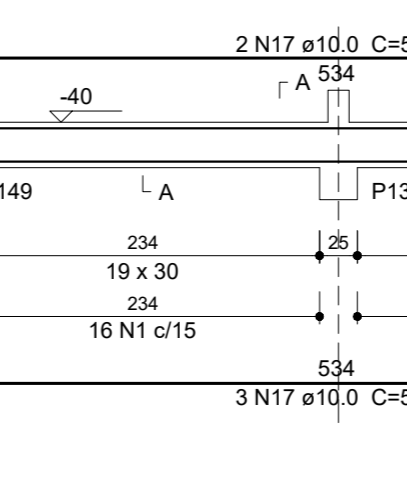
V45 (19 x 30)
ESC 1:50



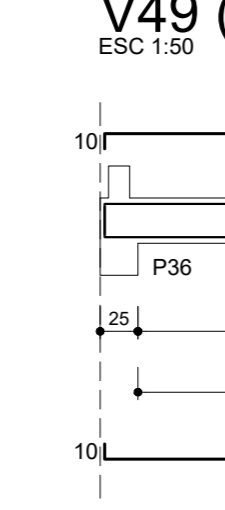
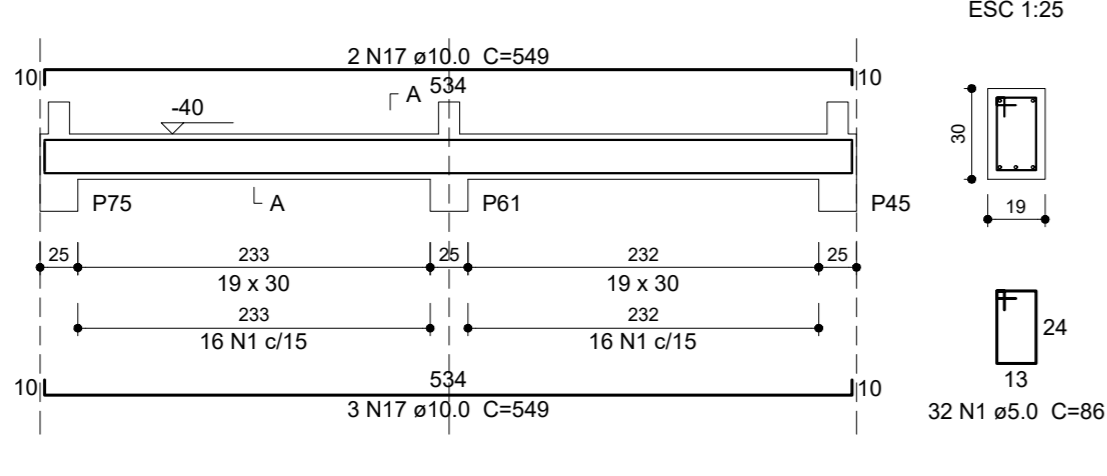
V40 (19 x 30)
ESC 1:50



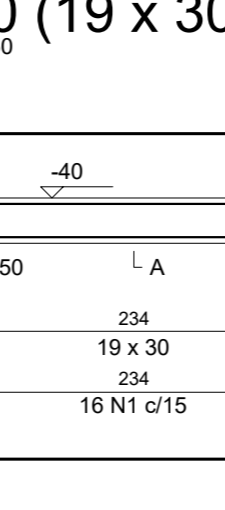
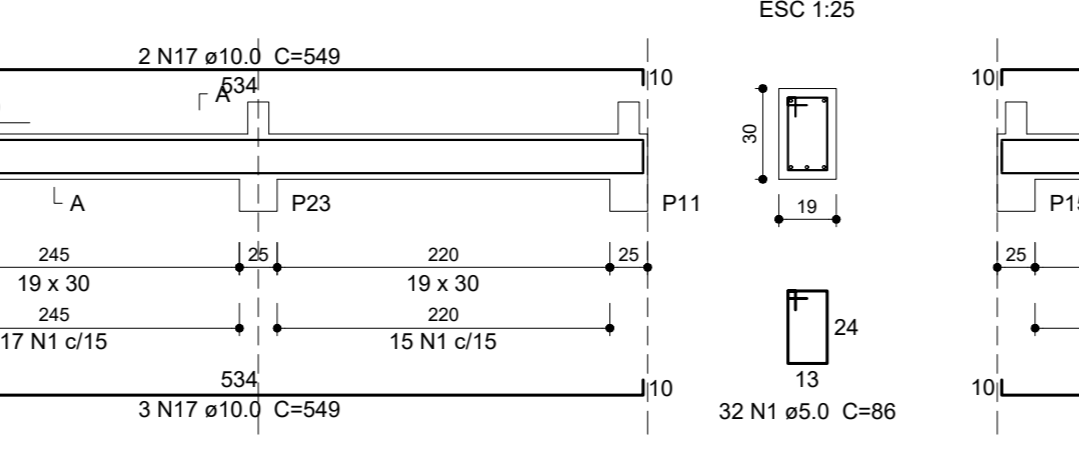
V46 (19 x 30)
ESC 1:50



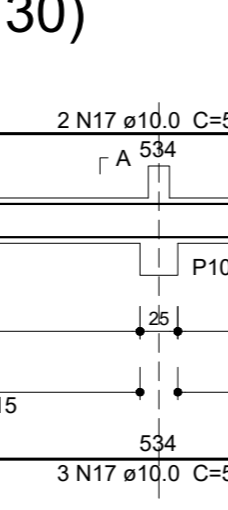
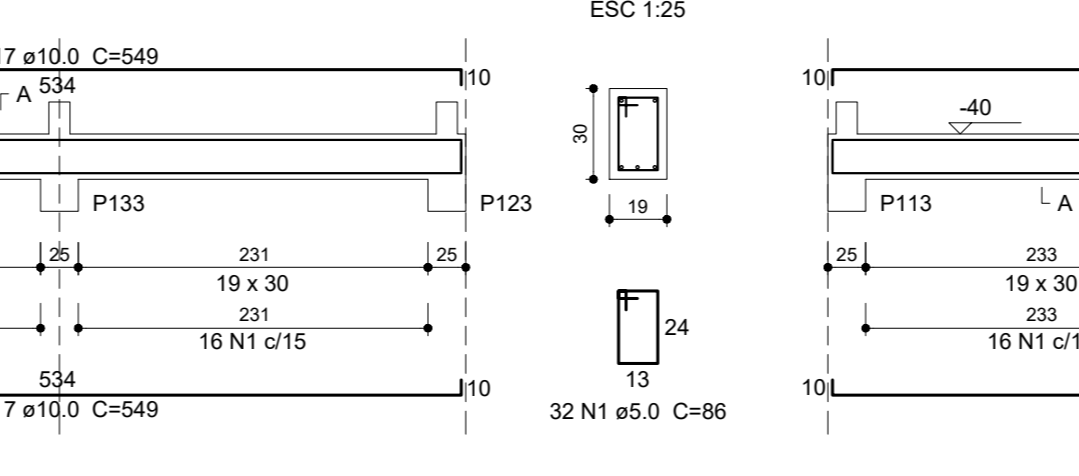
V48 (19 x 30)
ESC 1:50



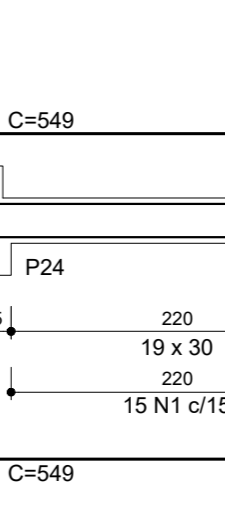
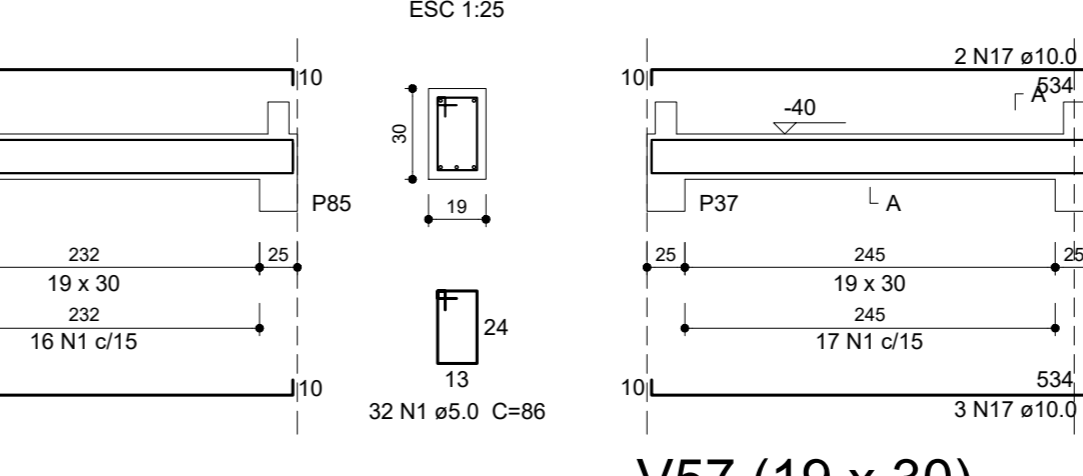
V49 (19 x 30)
ESC 1:50



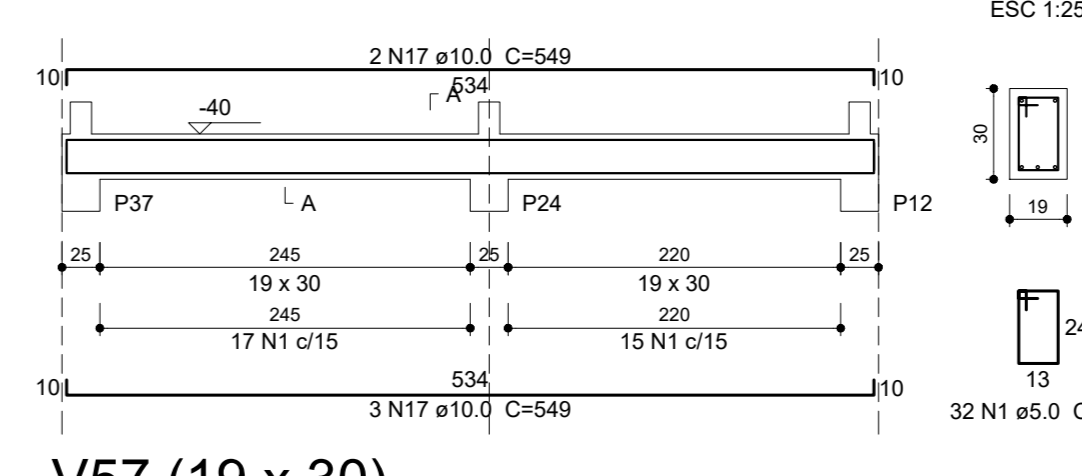
V50 (19 x 30)
ESC 1:50



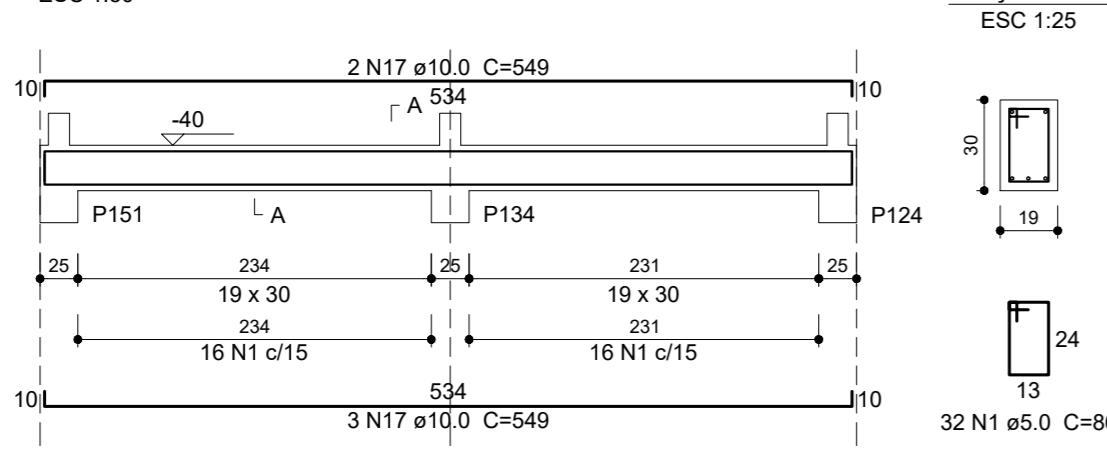
V51 (19 x 30)
ESC 1:50



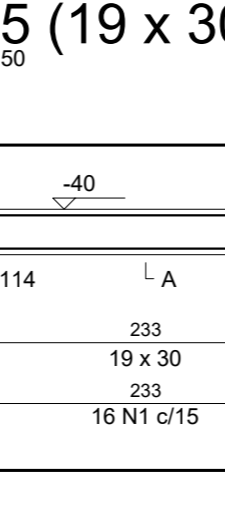
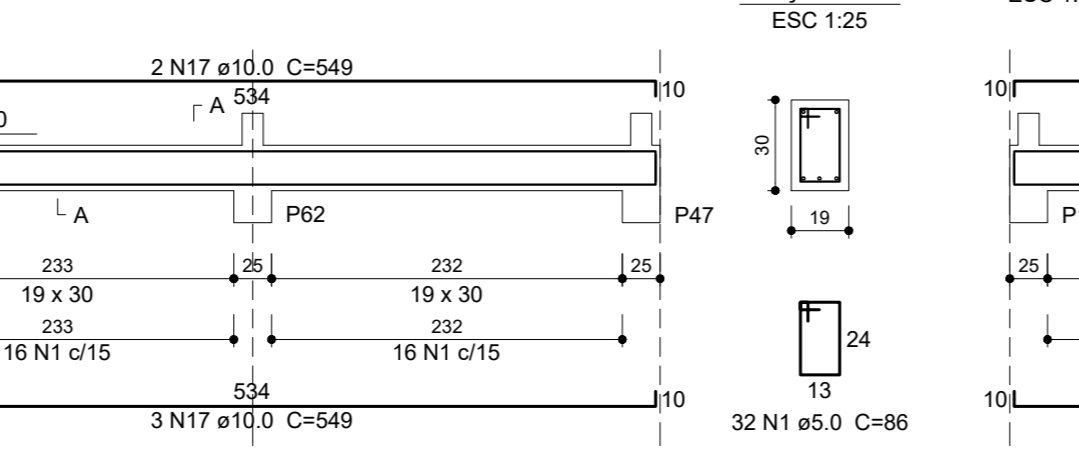
V52 (19 x 30)
ESC 1:50



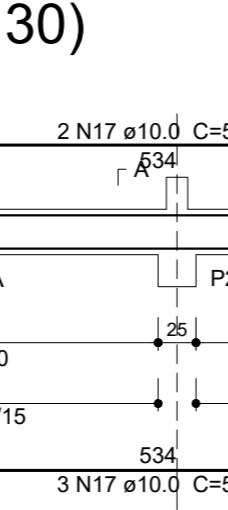
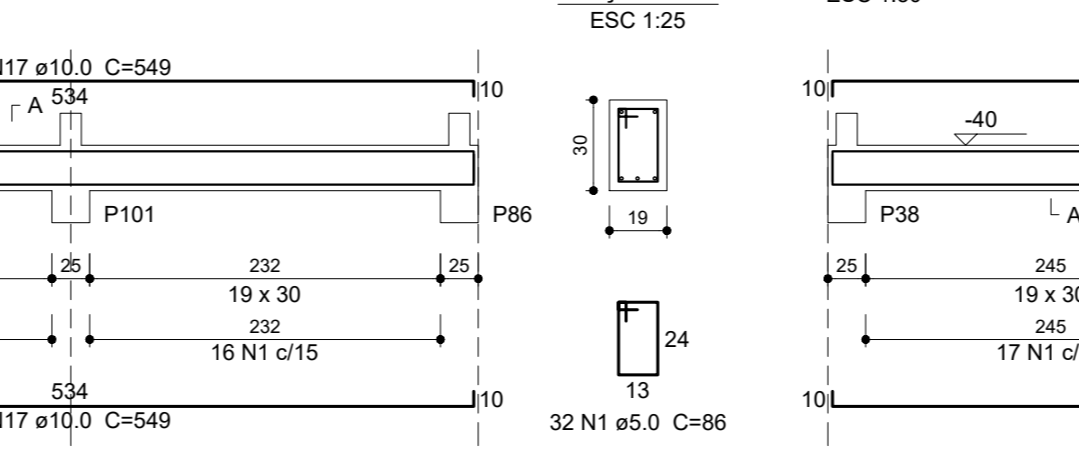
V53 (19 x 30)
ESC 1:50



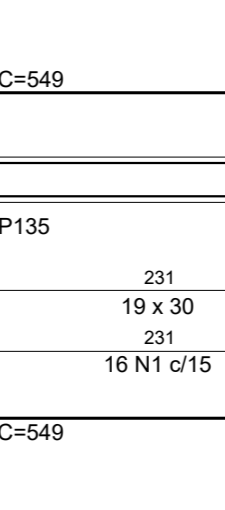
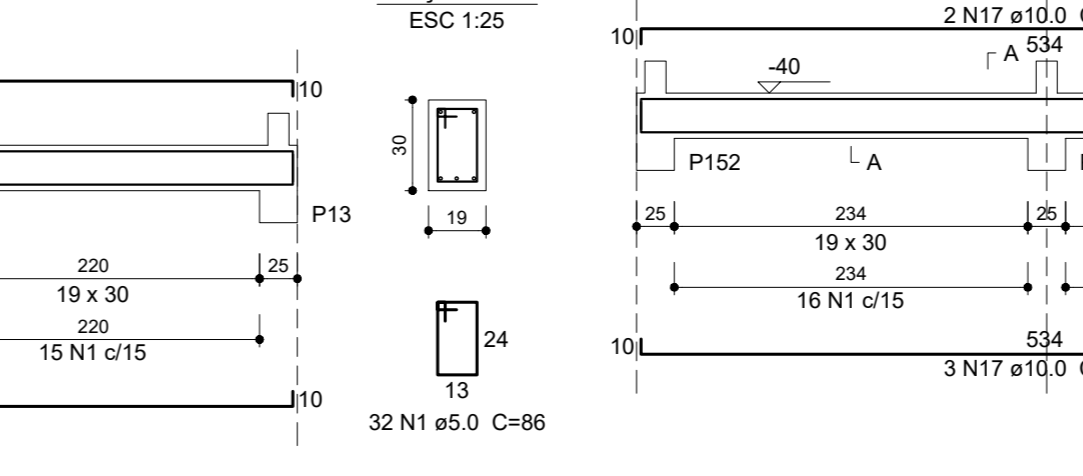
V54 (19 x 30)
ESC 1:50



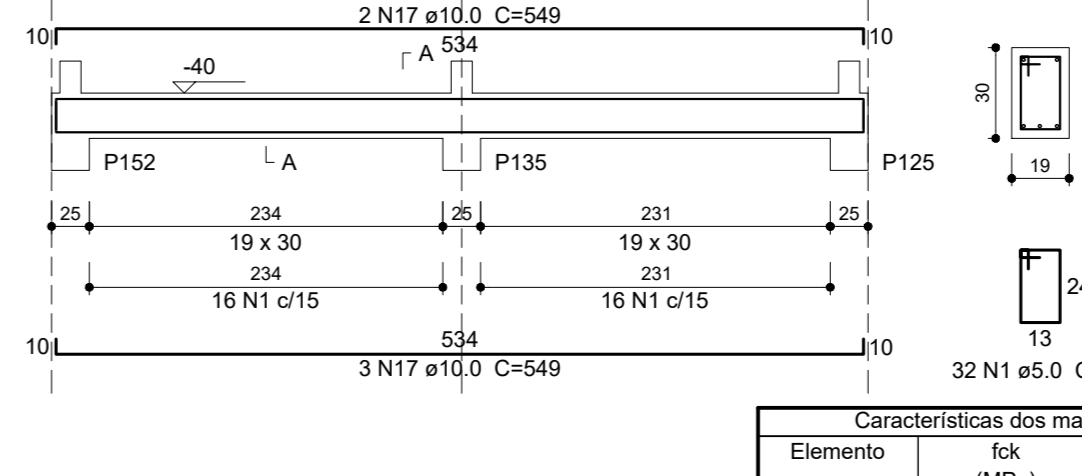
V55 (19 x 30)
ESC 1:50



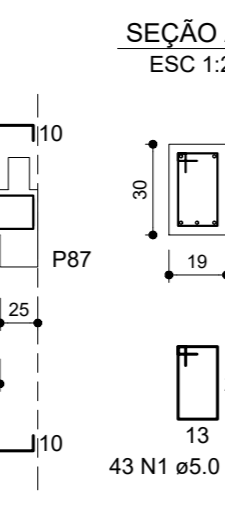
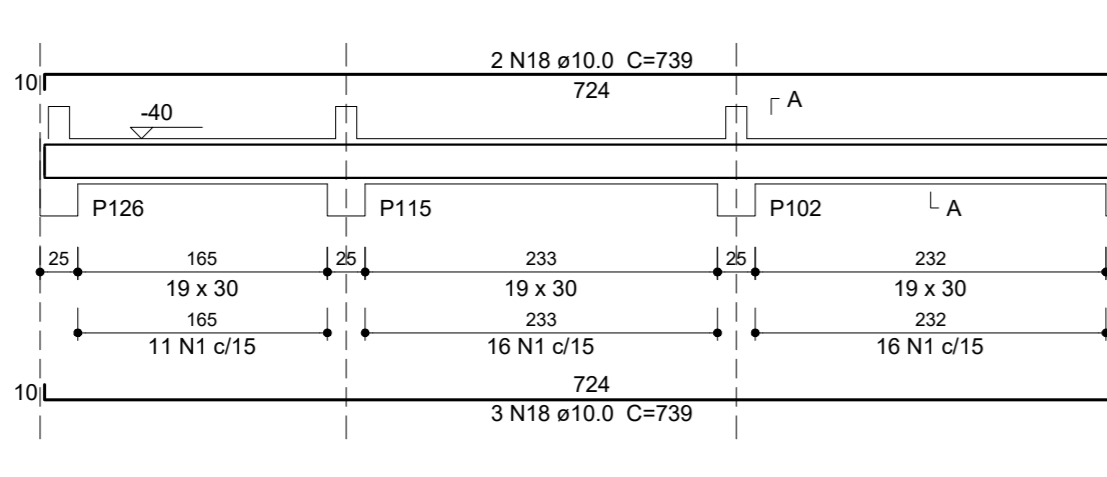
V56 (19 x 30)
ESC 1:50



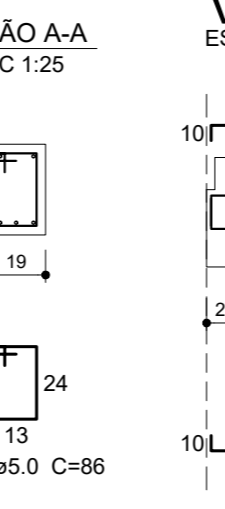
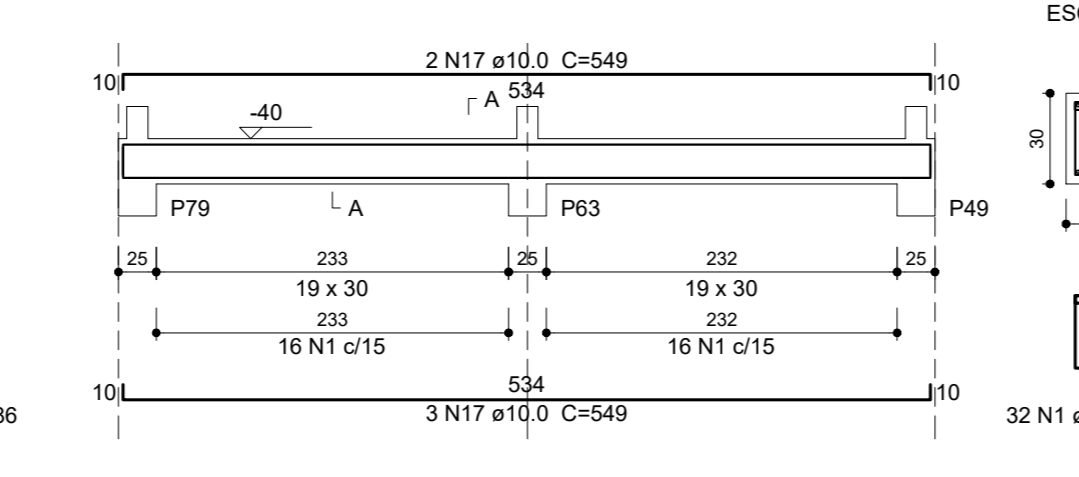
V57 (19 x 30)
ESC 1:50



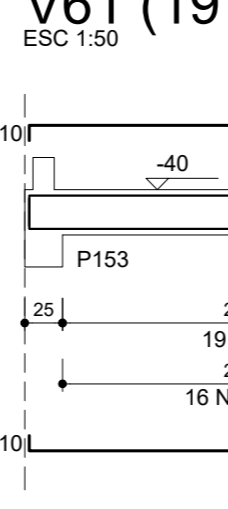
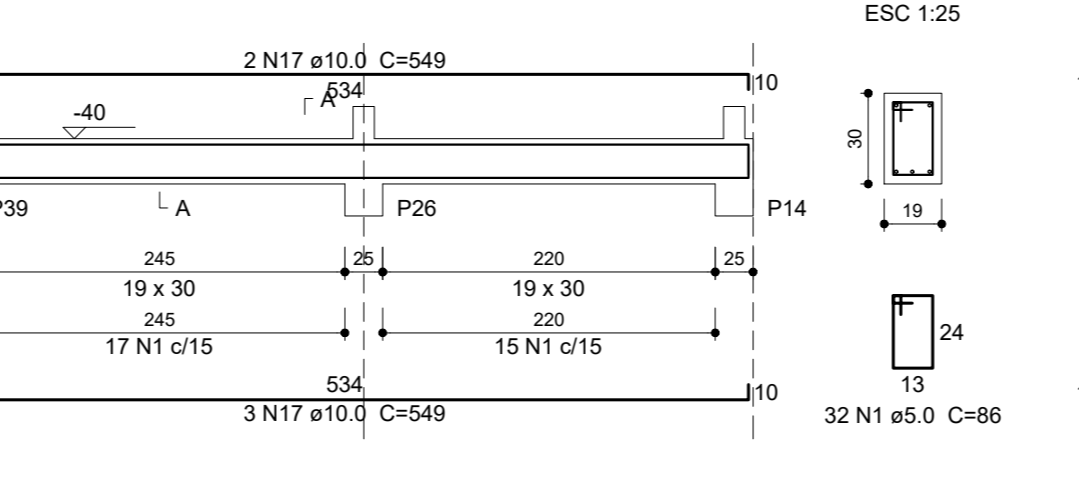
V58 (19 x 30)
ESC 1:50



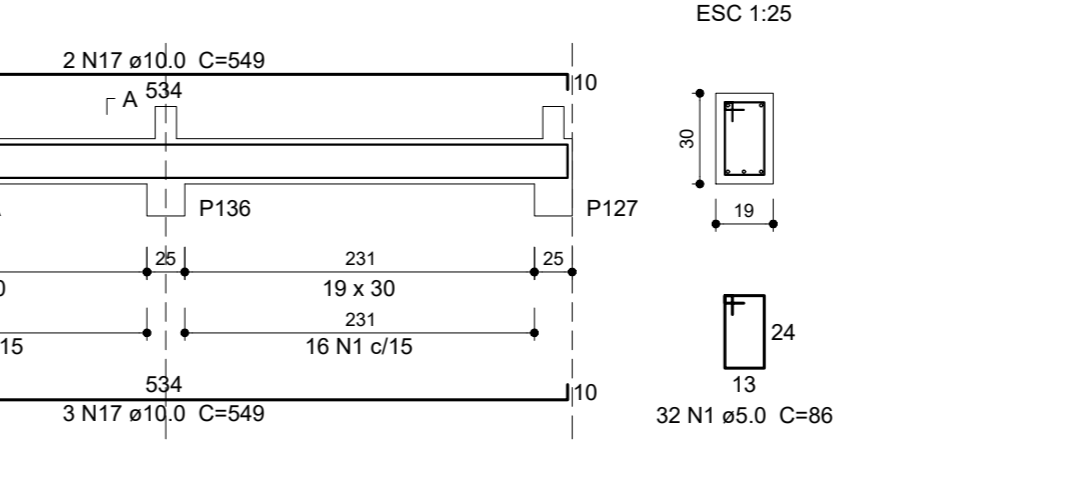
V59 (19 x 30)
ESC 1:50



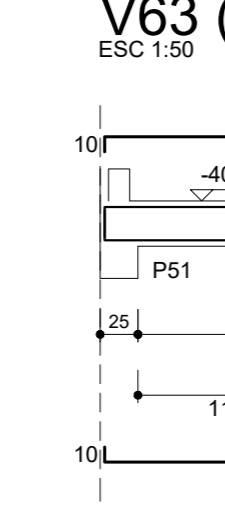
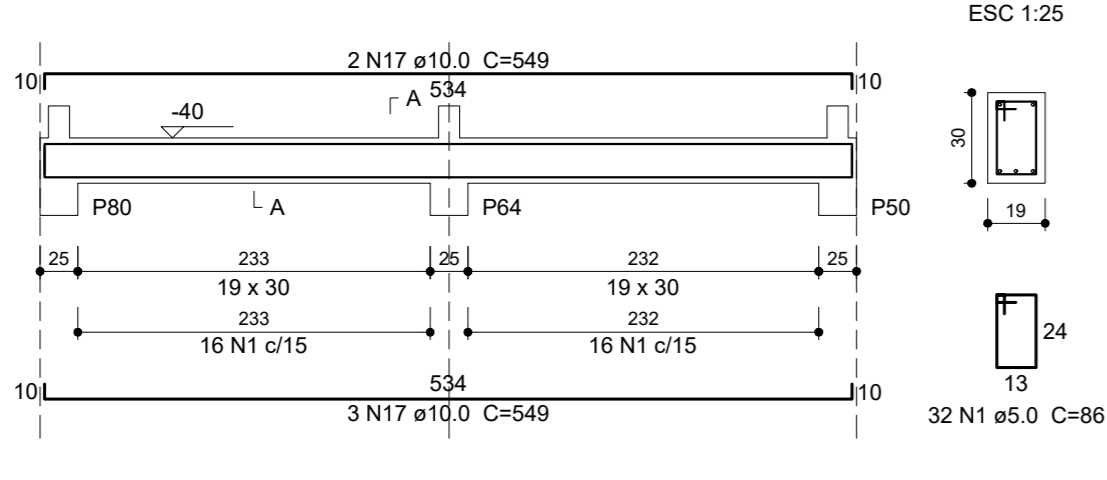
V60 (19 x 30)
ESC 1:50



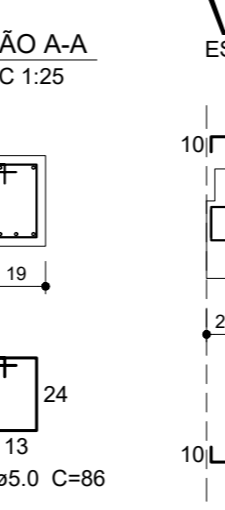
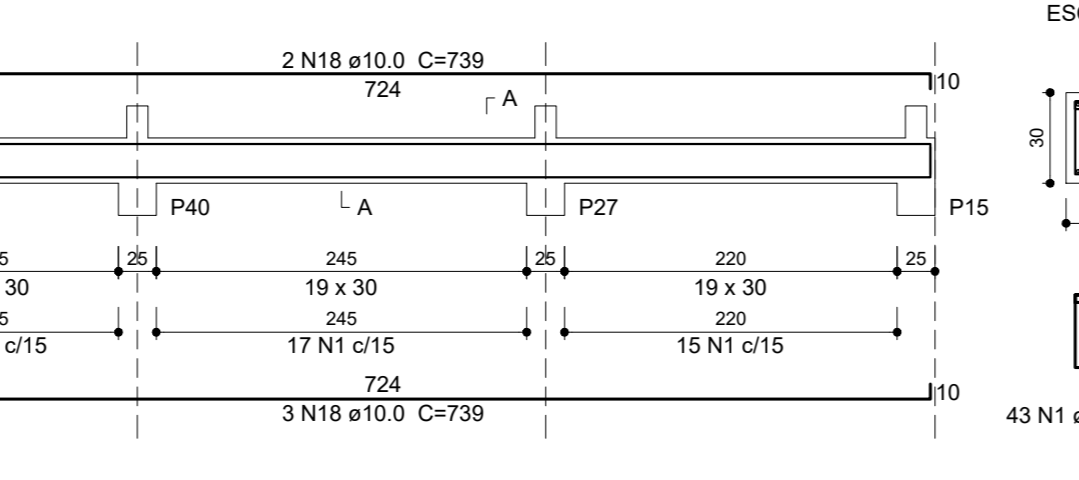
V61 (19 x 30)
ESC 1:50



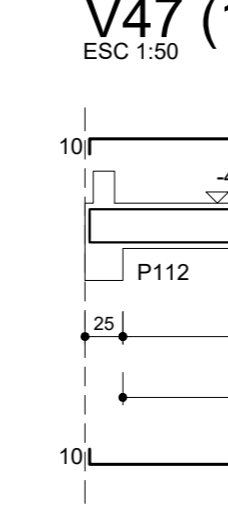
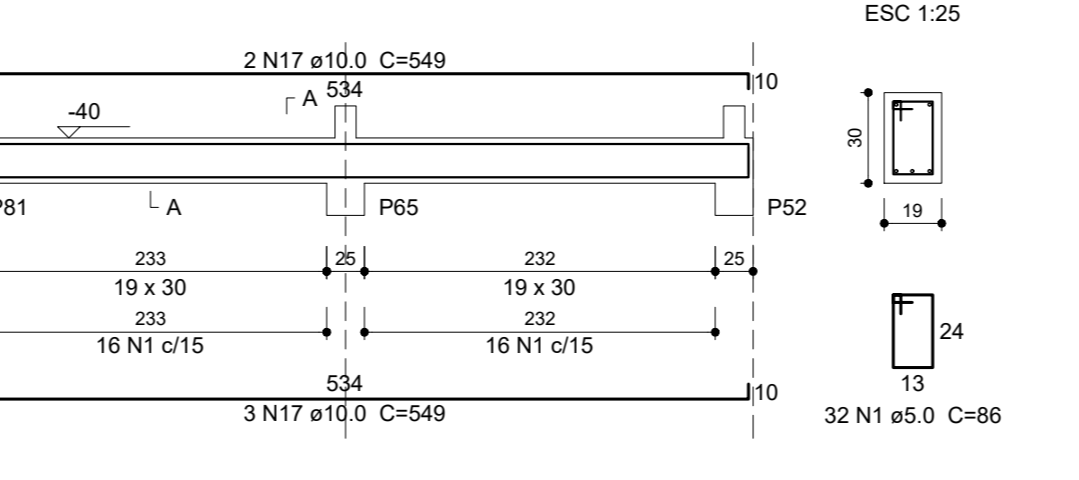
V62 (19 x 30)
ESC 1:50



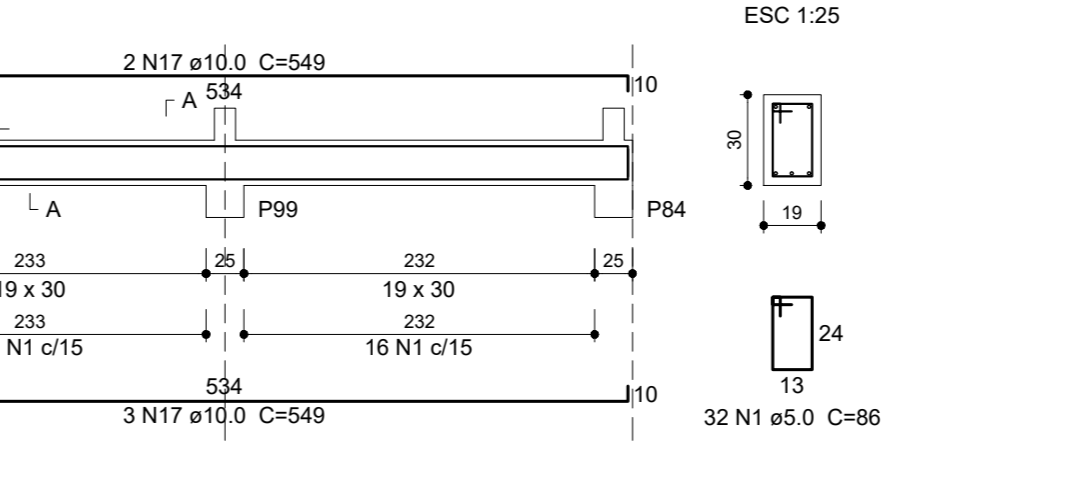
V63 (19 x 30)
ESC 1:50



V64 (19 x 30)
ESC 1:50



V47 (19 x 30)
ESC 1:50



Relação do aço - BALDRAME (3)

AÇO	N	DIAM (mm)	QUANT	CUNH (cm)	C TOTAL (cm)
CA60	1	5.0	1396	86	119196
CA60	2	10.0	3	1026	3078
CA60	3	10.0	3	941	2823
CA60	4	10.0	6	1168	7128
CA60	5	10.0	2	604	1608
CA60	6	10.0	3	1155	3465
CA60	7	10.0	3	812	2436
CA60	8	10.0	2	1190	2380
CA60	9	10.0	2	802	1604
CA60	10	10.0	3	988	2964
CA60	11	10.0	3	1192	3576
CA60	12	10.0	3	540	1620
CA60	13	10.0	6	1200	7200
CA60	14	10.0	2	376	752
CA60	15	10.0	5	190	950
CA60	16	10.0	5	196	980
CA60	17	10.0	100	540	54000
CA60	18	10.0	10	739	7390
CA60	19	10.0	3	1140	3447
CA60	20	10.0	3	1030	3090
CA60	21	10.0	3	1080	3240
CA60	22	10.0	3	666	1998
CA60	23	10.0	2	403	806

Resumo do aço

AÇO	DIAM (mm)	C TOTAL (m)	PESO + 10% (kg)
CA60	10.0	1174.8	786.7
CA60	5.0	1192	202.1
PESO TOTAL (kg)			
CA60		786.7	
CA60		202.1	

Características dos materiais (CONCRETO)				Legenda	
Elemento	f _{ck} (MPa)	f _{ctd} (MPa/cm²)	Agregado		Pilar que morre
Estacas	25	241500	Brita 1		Pilar que passa
Blocos	30	268384	Brita 1		Viga
Vigas	30	268384	Brita 1		Viga chata ou invertida
Placas	30	268384	Brita 1		Direção lajes pré PROTENDIDAS
CARGAS ACIDENTAIS NAS LAJES					
Forno = 100 Kg/m²					
4					
3					
2					
1					
0					
in*	data	por			Observações
AIC ENGENHARIA SC LTDA CENTRO DE TRATAMENTO AO AUTISMO R. Sérgio Antonio Antunes, 550 - 13.612-332 - LEME, SP adilson.corvalho100@gmail.com				ADILSON JOSÉ DE CARVALHO Engenheiro Civil - CREA 0600618483 R. Sérgio Antonio Antunes, 550 - 13.612-332 - LEME, SP adilson.corvalho100@gmail.com	
Projeto: PREFEITURA MUNICIPAL DE LEME Secretaria de Obras e Planejamento Urbano				E-08	
Assunto: Vigas do Baldrame (3) Arquiteta: Pedro Luiz Traidi - CAU 134056-5					
Local: R. JOSÉ SILVESTRE DE CARVALHO s/n - VILA BANCÁRIA - LEME/SP					
Escala: 1:25 e 1:50		Data: 04/jul/2022		Visão:	