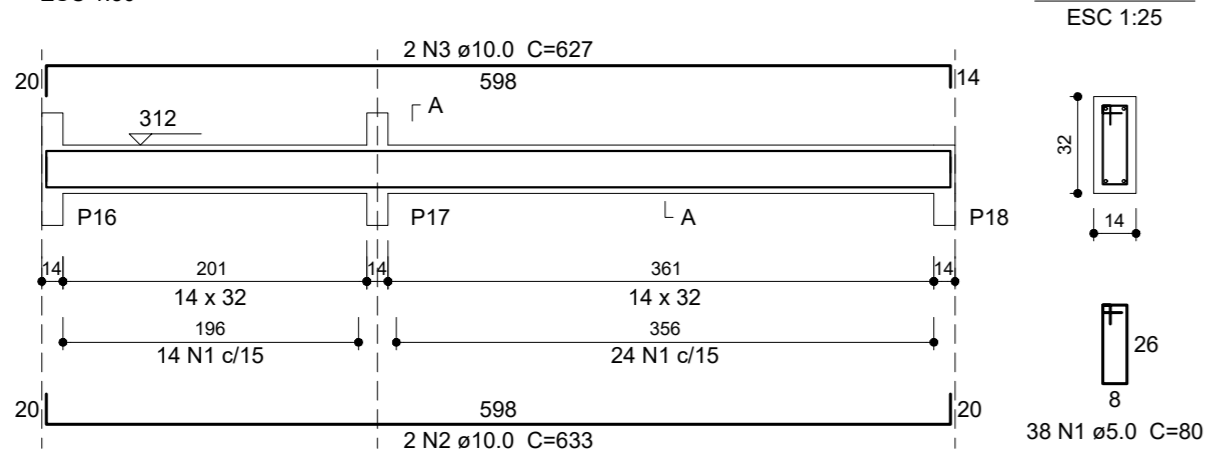
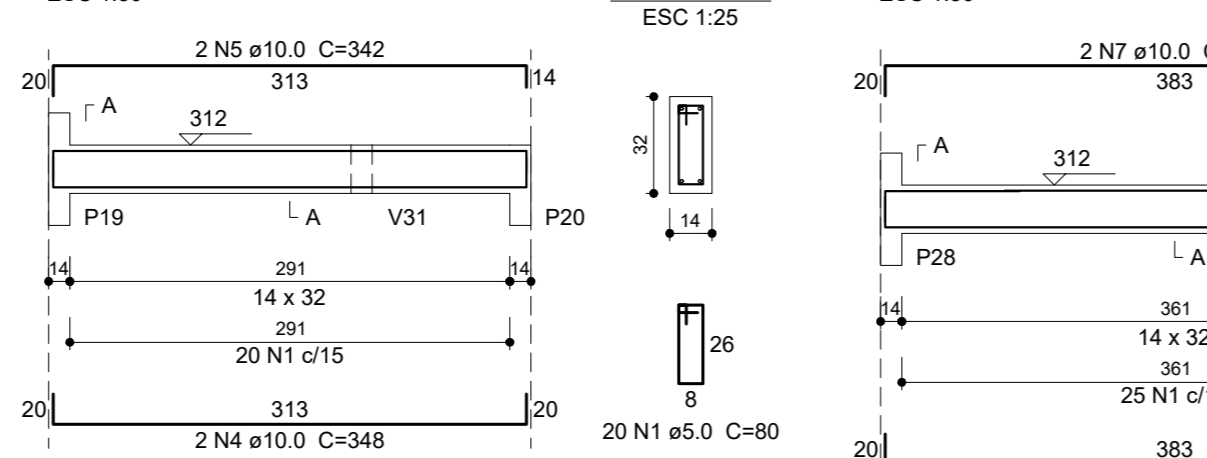


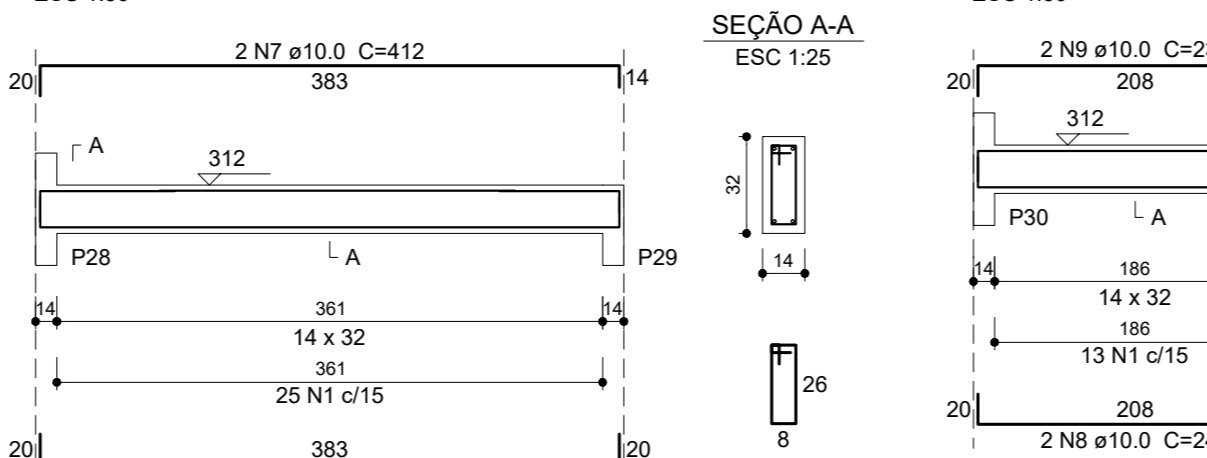
V2 (14 x 32)



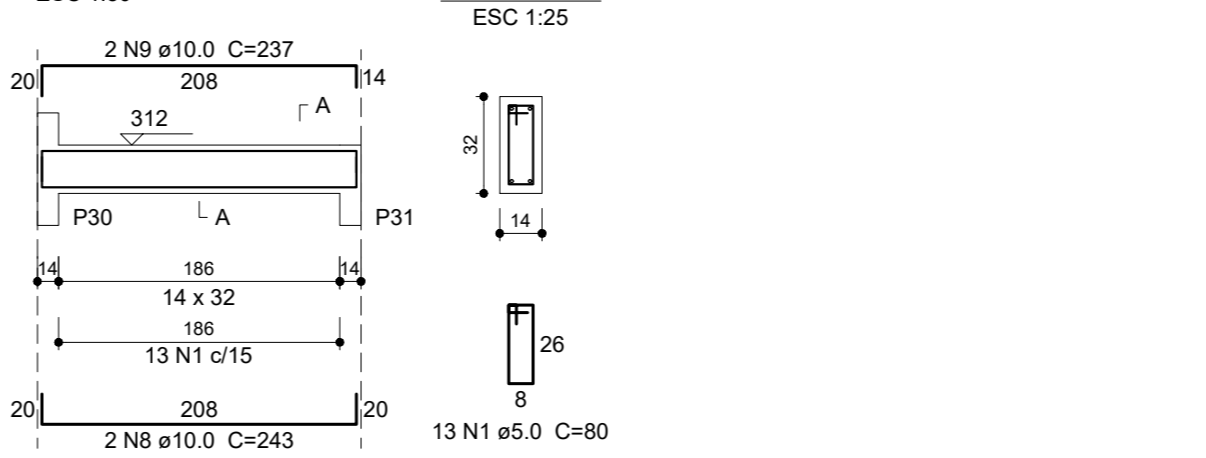
V3 (14 x 32)



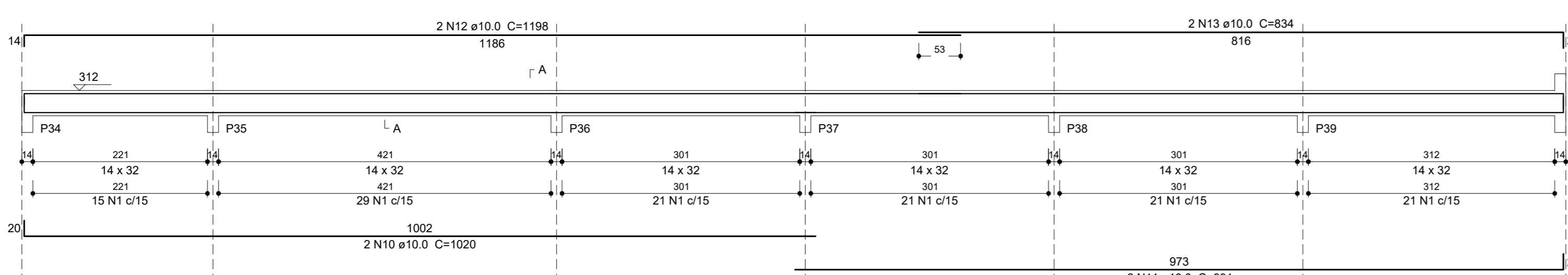
V4 (14 x 32)



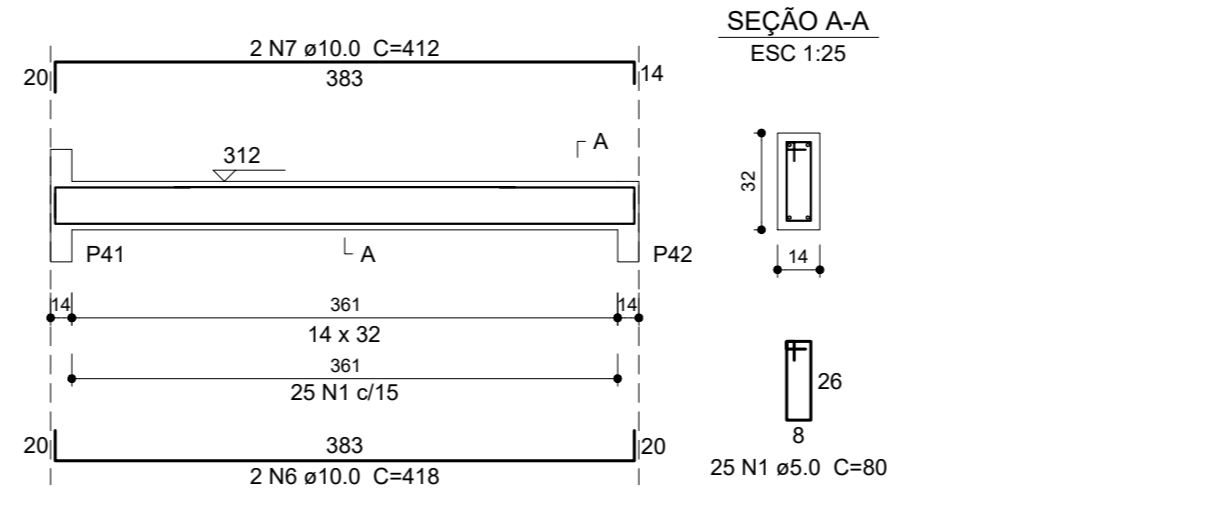
V5 (14 x 32)



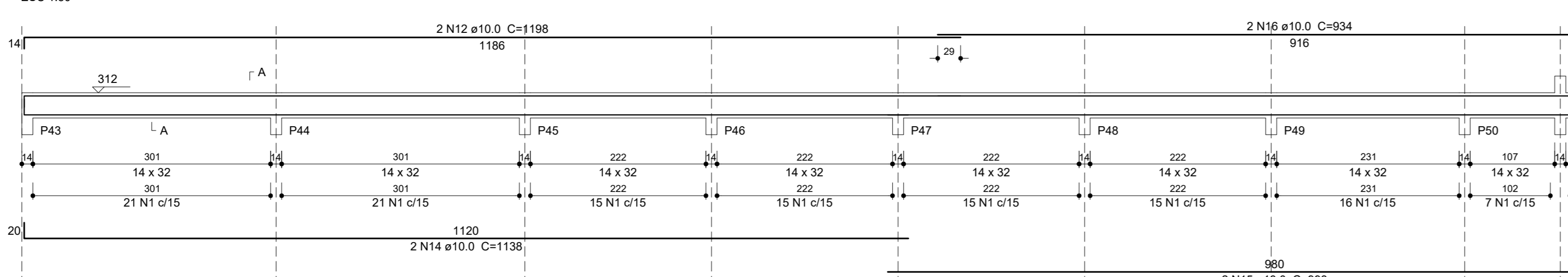
V6 (14 x 32)



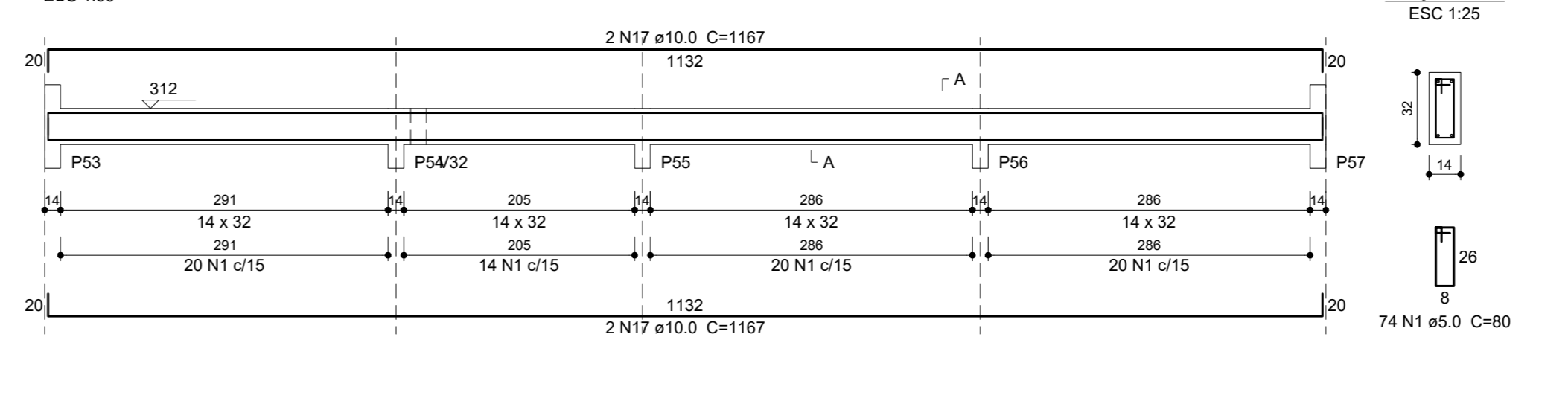
V7 (14 x 32)



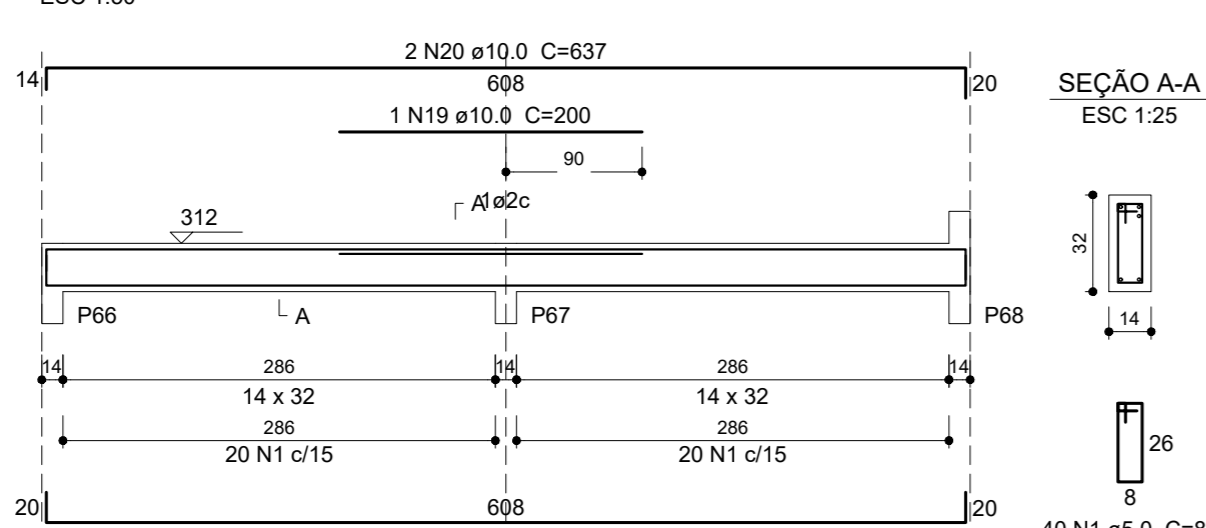
V8 (14 x 32)



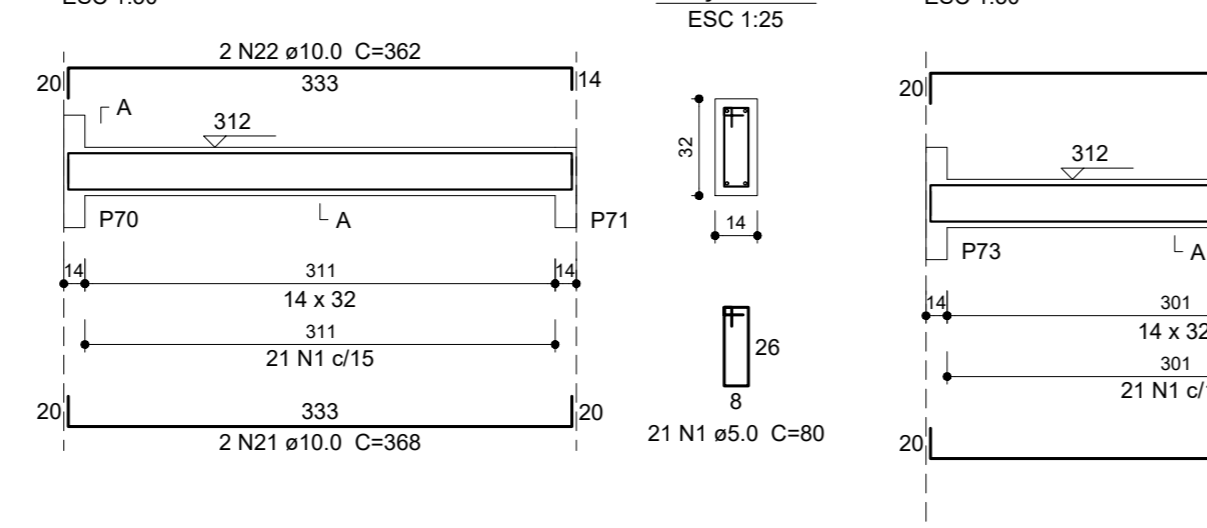
V9 (14 x 32)



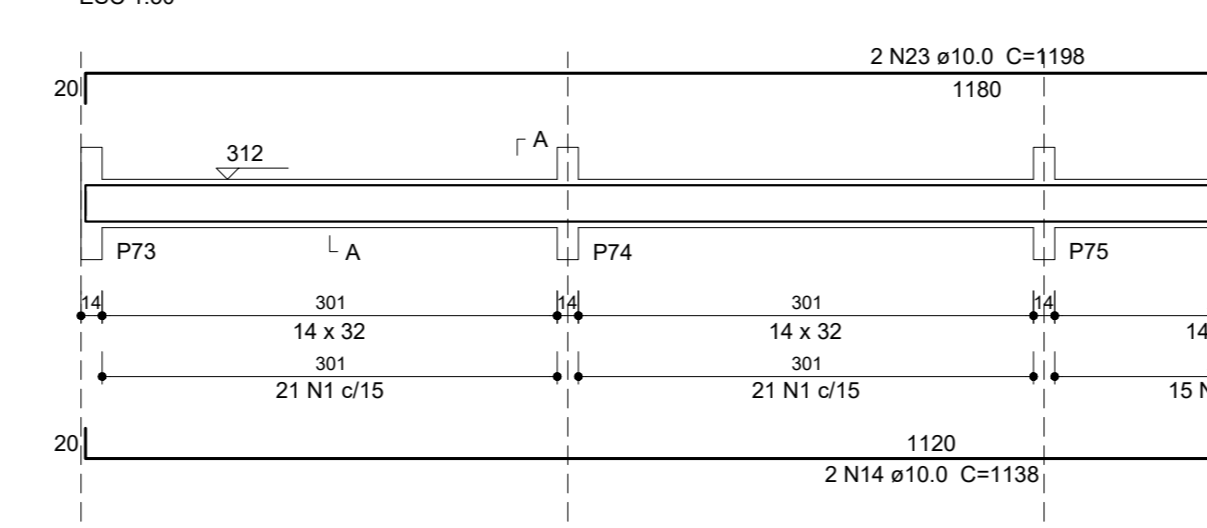
V10 (14 x 32)



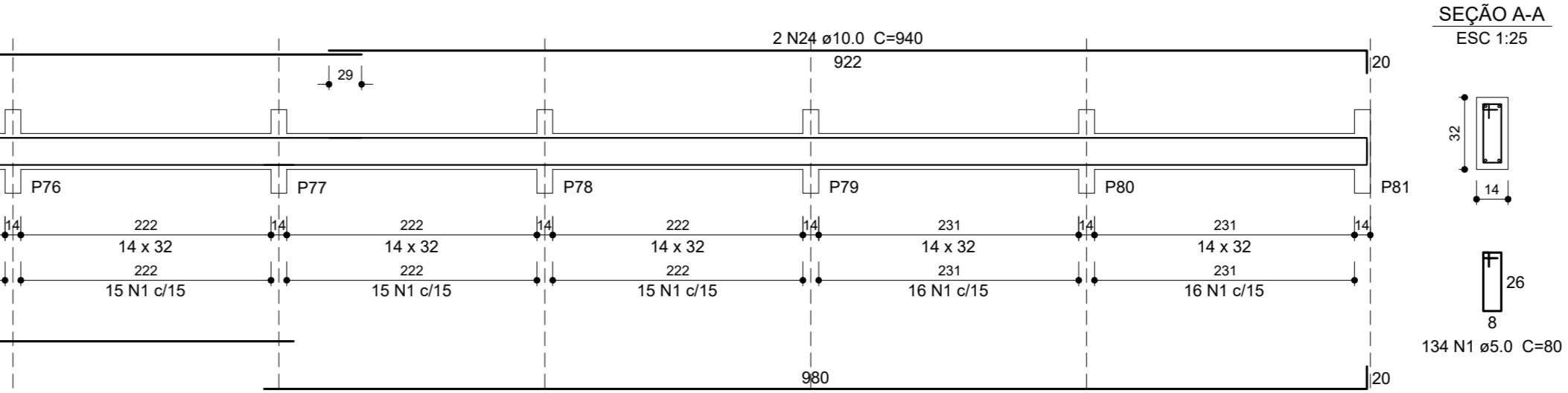
V11 (14 x 32)



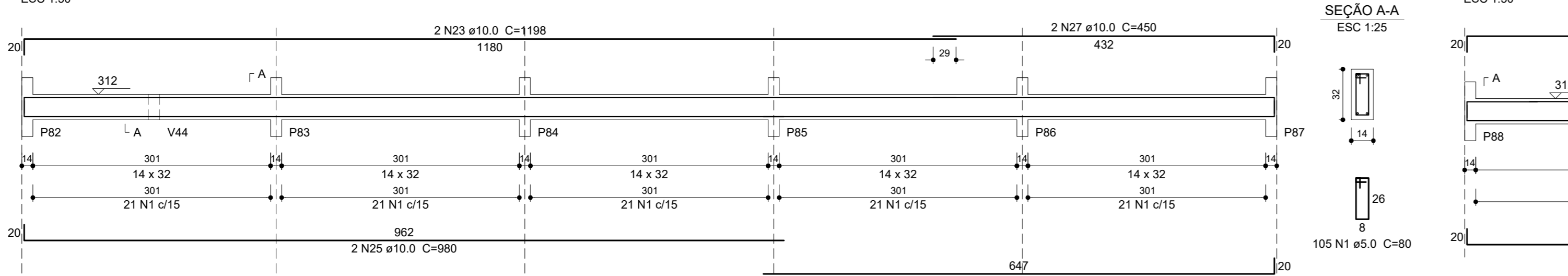
V12 (14 x 32)



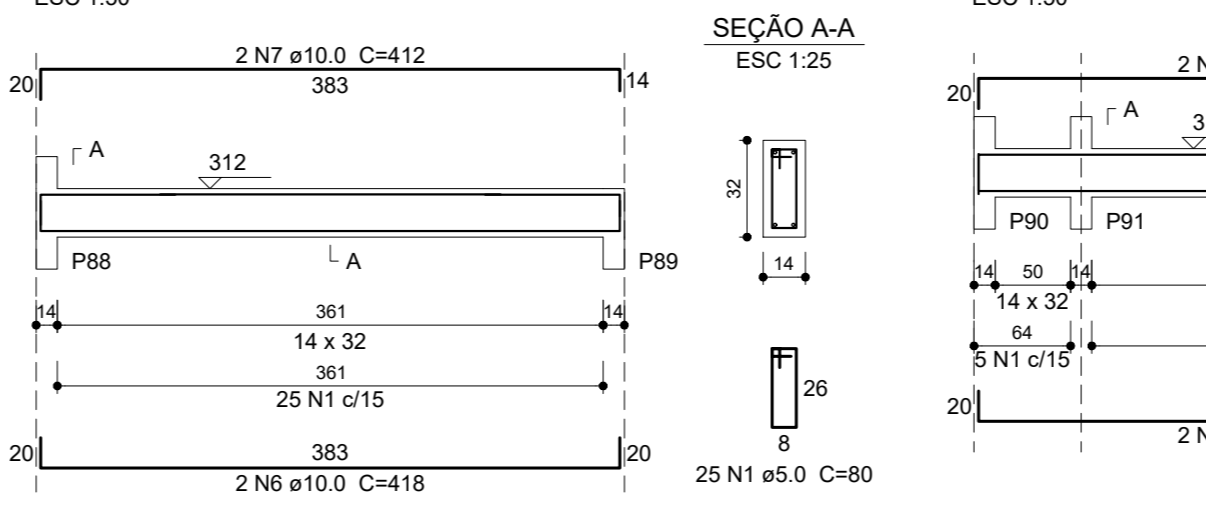
V13 (14 x 32)



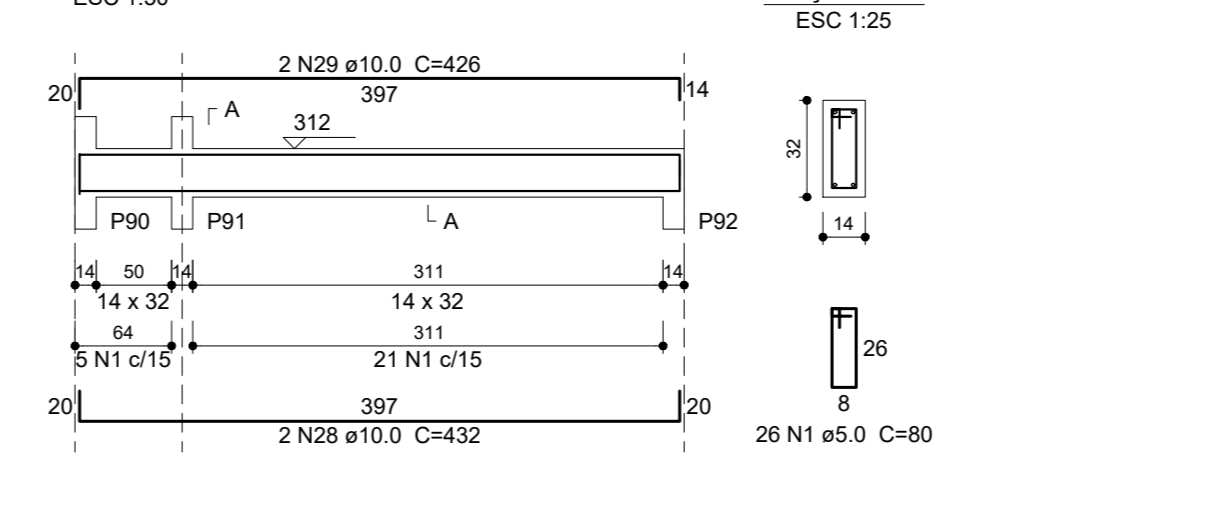
V13 (14 x 32)



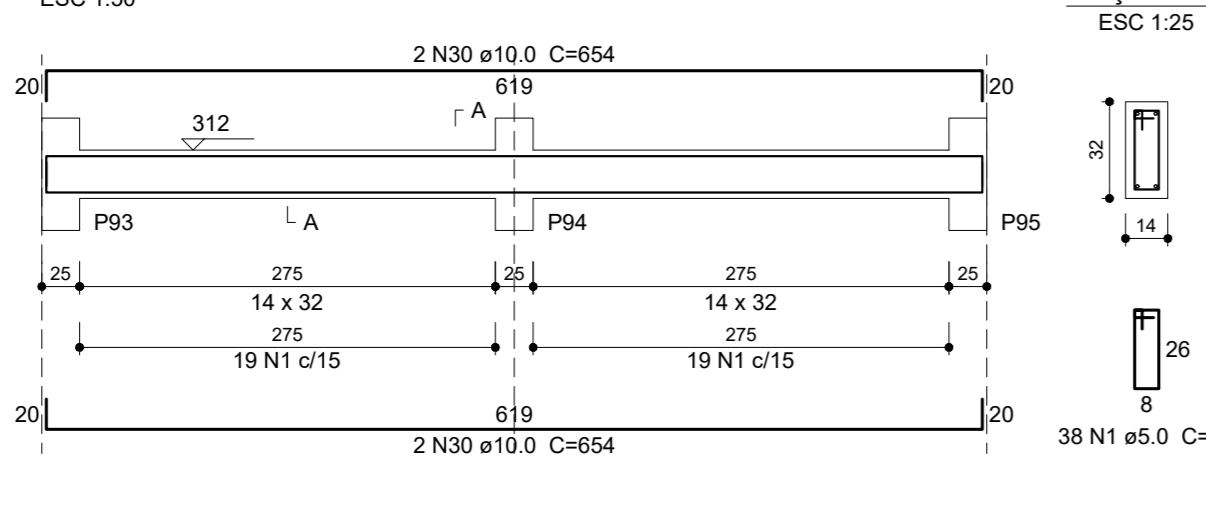
V14 (14 x 32)



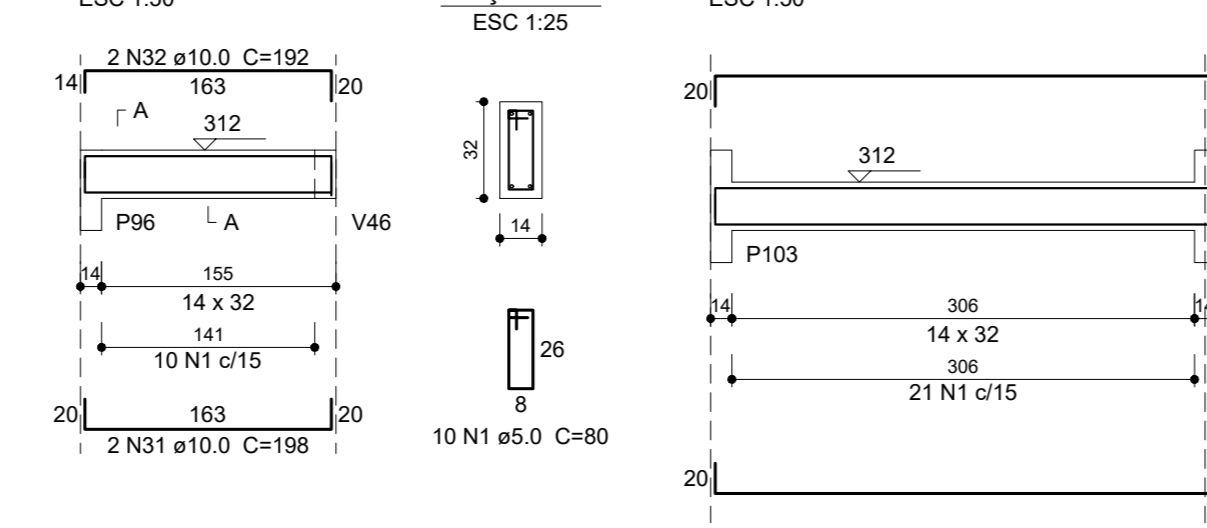
V15 (14 x 32)



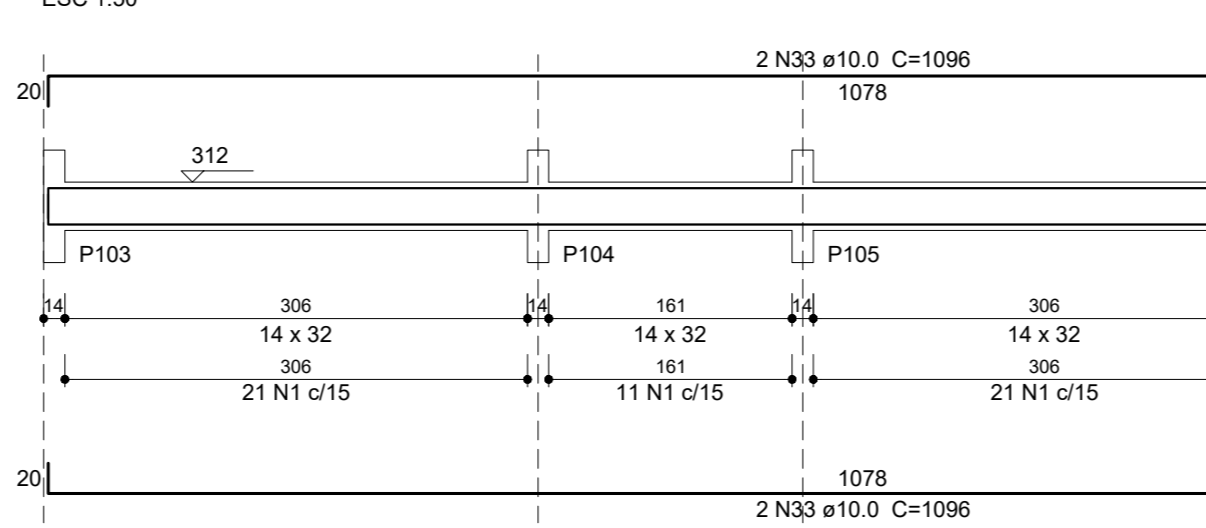
V16 (14 x 32)



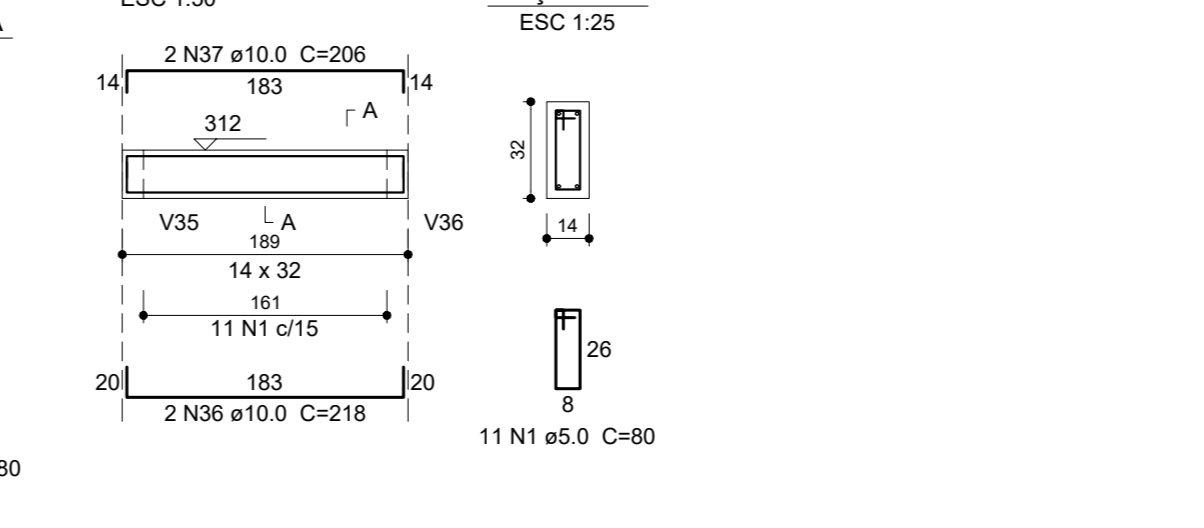
V17 (14 x 32)



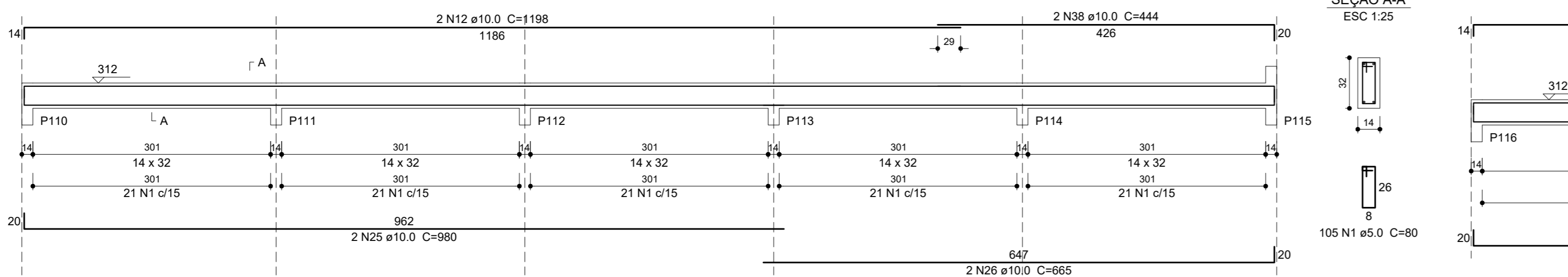
V18 (14 x 32)



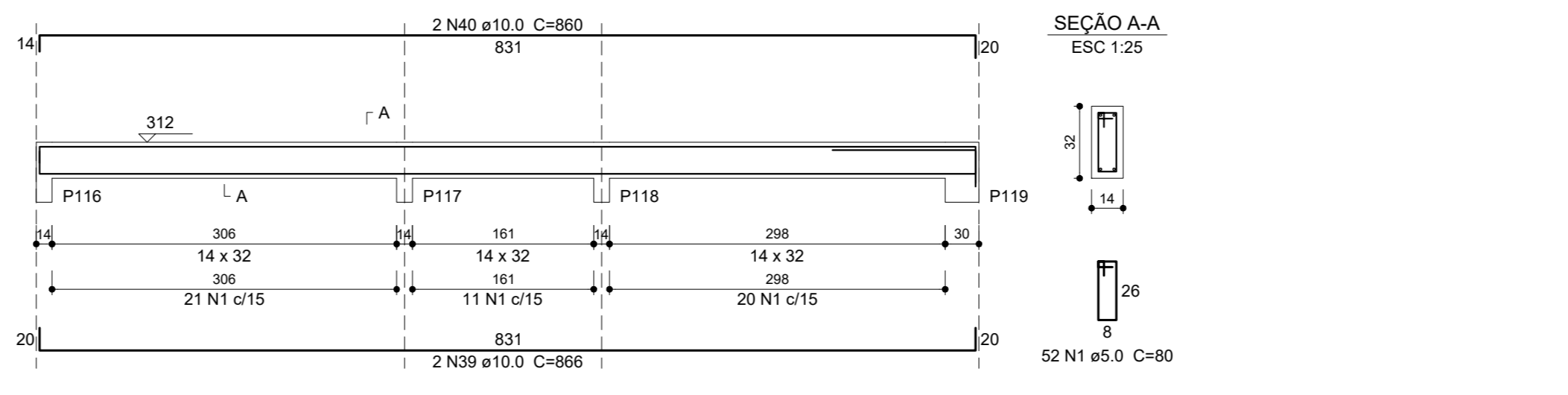
V19 (14 x 32)



V20 (14 x 32)



V21 (14 x 32)



Relação do aço - FORRO (1)

AÇO	N	DIAM (mm)	QUANT	C.UNIT (cm)	C.TOTAL (cm)
CA80	1	5.0	1000	80	80000
CA50	2	10.0	2	633	1266
	3	10.0	2	627	1254
	4	10.0	2	348	696
	5	10.0	2	342	684
	6	10.0	6	418	2508
	7	10.0	6	412	2472
	8	10.0	2	243	486
	9	10.0	2	237	474
	10	10.0	2	1020	2040
	11	10.0	2	991	1982
	12	10.0	6	1198	7188
	13	10.0	2	834	1668
	14	10.0	4	1138	4552
	15	10.0	4	998	3992
	16	10.0	2	934	1868
	17	10.0	4	1167	4668
	18	10.0	2	643	1286
	19	10.0	1	200	200
	20	10.0	2	637	1274
	21	10.0	2	368	736
	22	10.0	2	362	724
	23	10.0	4	1198	4792
	24	10.0	2	840	1680
	25	10.0	4	980	3920
	26	10.0	4	665	2660
	27	10.0	2	450	900
	28	10.0	2	432	864
	29	10.0	2	426	852
	30	10.0	4	654	2616
	31	10.0	2	198	396
	32	10.0	2	192	384
	33	10.0	4	167	668
	34	10.0	2	1086	4344
	35	10.0	2	161	322
	36	10.0	2	218	436
	37	10.0	2	206	412
	38	10.0	2	444	888
	39	10.0	2	856	1712
	40	10.0	2	860	1720

Resumo do aço

AÇO	DIAM (mm)	C.TOTAL (m)	PESO + 10% (kg)
CA50	10.0	715.1	485
CA80	5.0	880	149.2
PESO TOTAL (kg)			634.2
CA50			485
CA80			149.2

Características dos materiais (CONCRETO)				Legenda	
Elemento	f _{ck} (MPa)	f _{ctd} (MPa)	Agregado		Pilar que nome
Estacas	25	241500	Brita 1		Pilar que passa
Blocos	30	268384	Brita 1		Pilar que nasce
Vigas	30	268384	Brita 1		Viga
Placas	30	268384	Brita 1		Viga chata ou invertida
CARGAS ACIDENTAIS NAS LAJES				Direção lajes por PROTENDIDAS	
Forro = 100 Kg/m ²					
Observações					
R. Sérgio Antunes, 550 - 13.612-332 - LEME, SP					
ADILSON JOSÉ DE CARVALHO					
Engenheiro Civil - CREA 06006184/83					
adilson.carvalho100@gmail.com					
AJC ENGENHARIA SC LTDA				Folha	
CENTRO DE TRATAMENTO AO AUTISMO				E-09	
Prestador: PREFEITURA MUNICIPAL DE LEME					
Secretaria de Obras e Planejamento Urbano					
Assunto: Vigas do Forro (1)					
Arquiteta: Pedro Luiz Traidi - CAU 134056-5					
Local: R.: JOSÉ SILVESTRE DE CARVALHO s/n - VILA BANCÁRIA - LEME/SP					
Escala: 1:25 e 1:50				Data: 04/jul/2022	