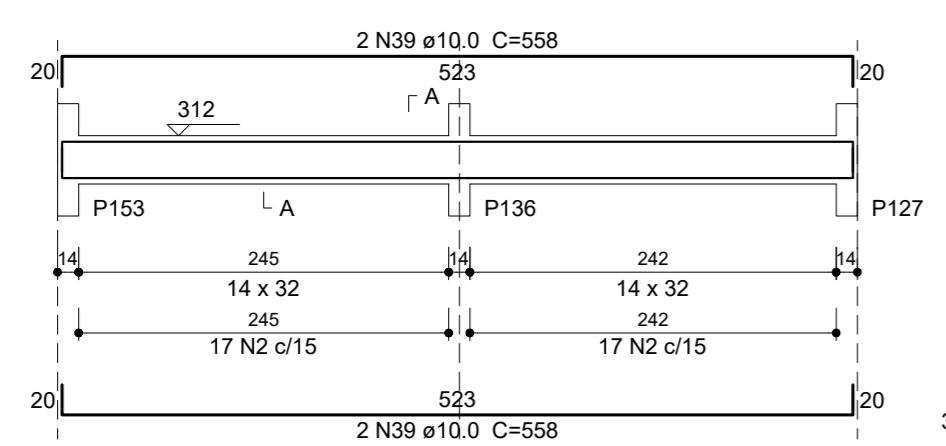
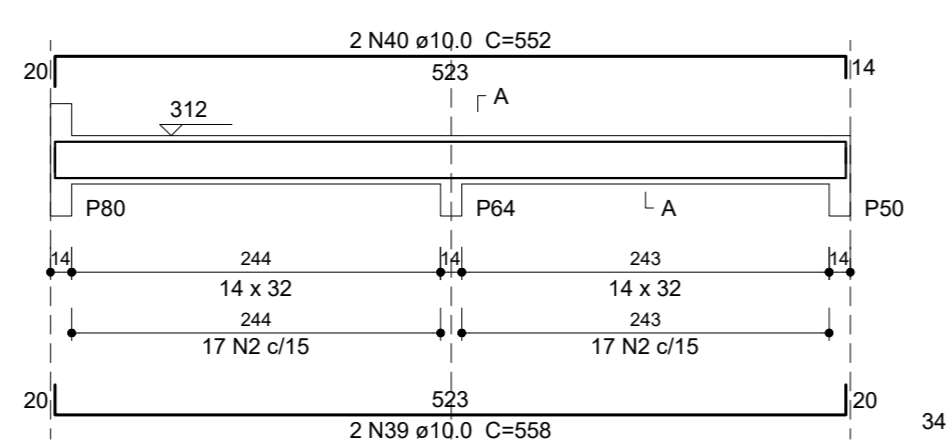


V63 (14 x 32)
ESC 1:50



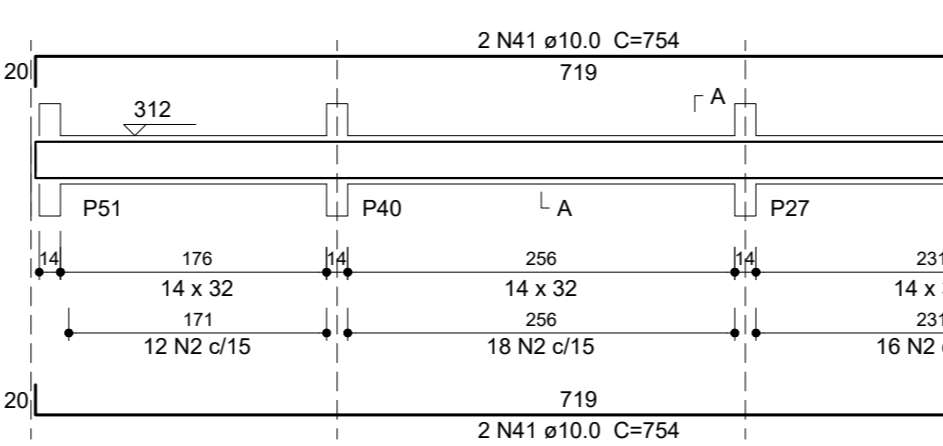
SEÇÃO A-A
ESC 1:25

V64 (14 x 32)
ESC 1:50



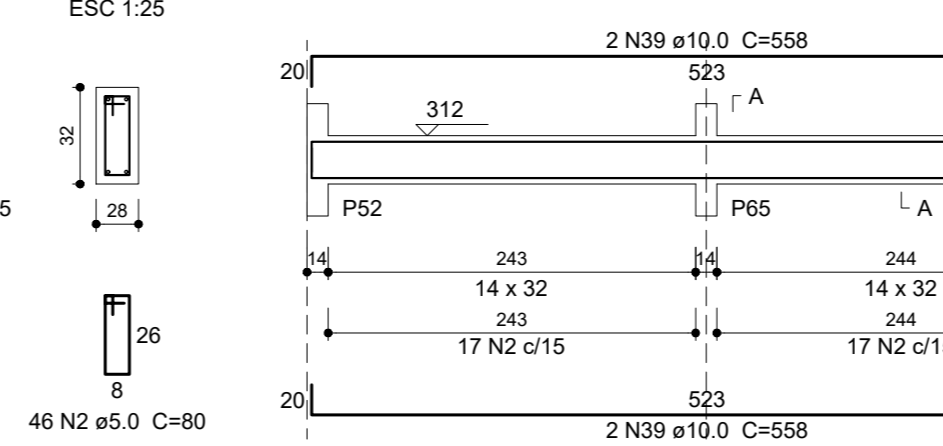
SEÇÃO A-A
ESC 1:25

V65 (14 x 32)
ESC 1:50



SEÇÃO A-A
ESC 1:25

V66 (14 x 32)
ESC 1:50



SEÇÃO A-A
ESC 1:25

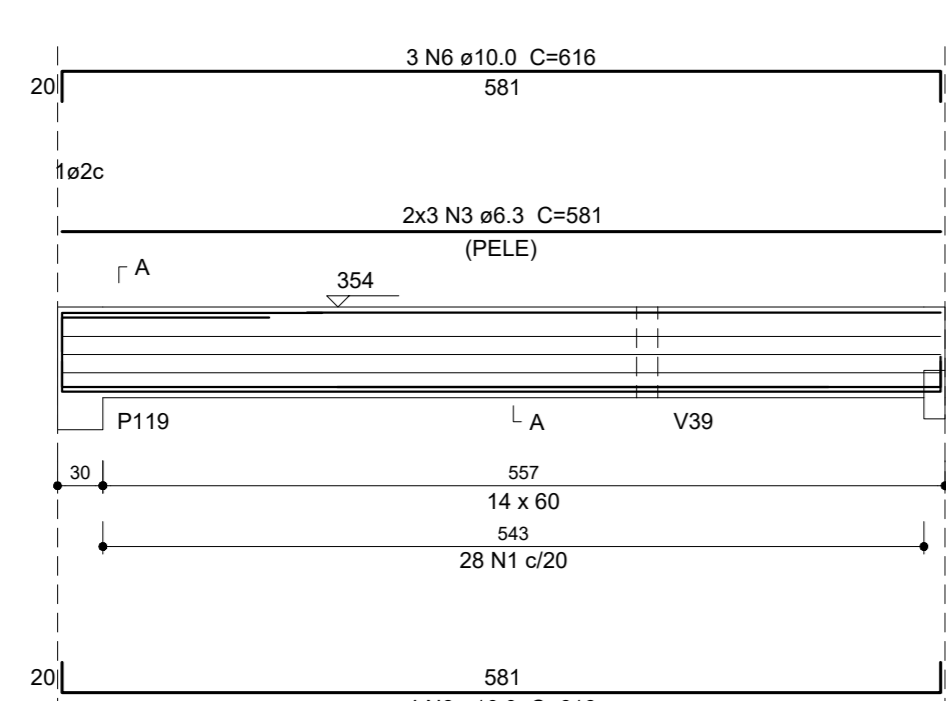
Relação do aço - FORRO (2)

AÇO	N	DIAM (mm)	QUANT	C.LINIT (cm)	C.TOTAL (cm)
CA60	1	5.0	94	136	12784
CA60	2	5.0	859	80	76720
CA60	3	6.3	6	281	3486
CA60	4	6.3	6	1200	7200
CA60	5	6.3	6	250	1500
CA60	6	10.0	7	616	4312
CA60	7	10.0	4	1100	4400
CA60	8	10.0	4	665	2660
CA60	9	10.0	2	335	665
CA60	10	10.0	2	1200	2400
CA60	11	10.0	2	276	552
CA60	12	10.0	6	631	3786
CA60	13	10.0	2	632	1264
CA60	14	10.0	2	570	1140
CA60	15	10.0	2	186	372
CA60	16	10.0	4	1140	4560
CA60	17	10.0	4	285	1140
CA60	18	10.0	3	363	1179
CA60	19	10.0	3	1048	3144
CA60	20	10.0	6	1198	7188
CA60	21	10.0	2	570	1140
CA60	22	10.0	4	1158	4632
CA60	23	10.0	2	1095	2190
CA60	24	10.0	2	515	1030
CA60	25	10.0	2	427	854
CA60	26	10.0	2	306	616
CA60	27	10.0	2	296	592
CA60	28	10.0	3	1121	3363
CA60	29	10.0	3	385	1155
CA60	30	10.0	3	1132	3396
CA60	31	10.0	3	406	1218
CA60	32	10.0	3	883	2649
CA60	33	10.0	3	877	2631
CA60	34	10.0	2	1158	2316
CA60	35	10.0	2	716	1432
CA60	36	10.0	2	686	1382
CA60	37	10.0	5	383	1915
CA60	38	10.0	4	387	1548
CA60	39	10.0	10	658	6580
CA60	40	10.0	2	552	1104
CA60	41	10.0	4	754	3016

Resumo do aço

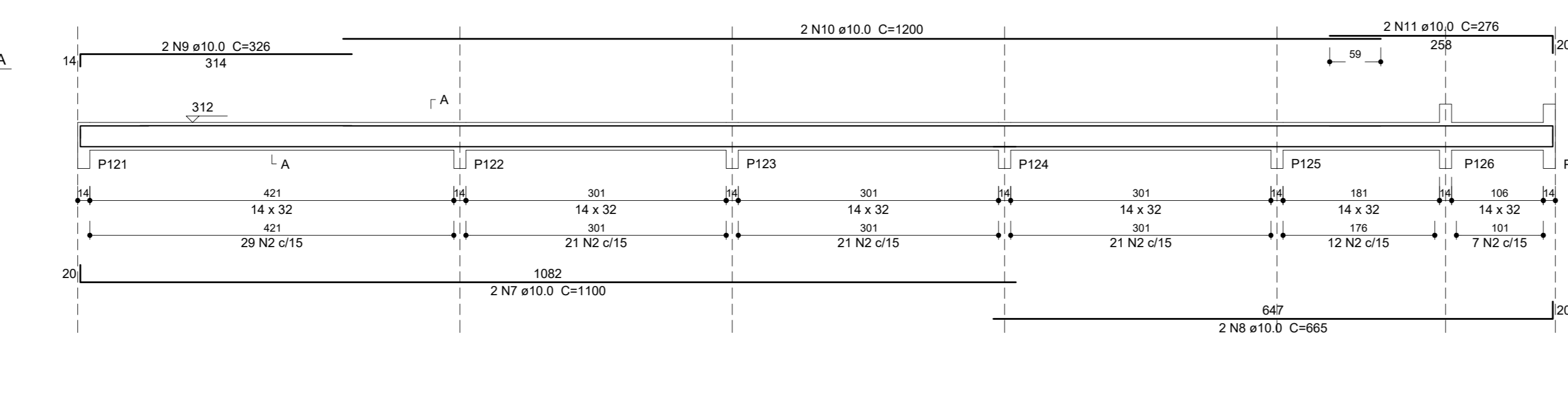
AÇO	DIAM (mm)	C.TOTAL (cm)	PESO + 10% (kg)
CA50	6.3	121.9	32.8
CA50	10.0	818.6	355.2
CA60	5.0	895.1	151.8
PESO TOTAL (kg)			
CA50	588		
CA60	151.8		

V22 (14 x 60)
ESC 1:50



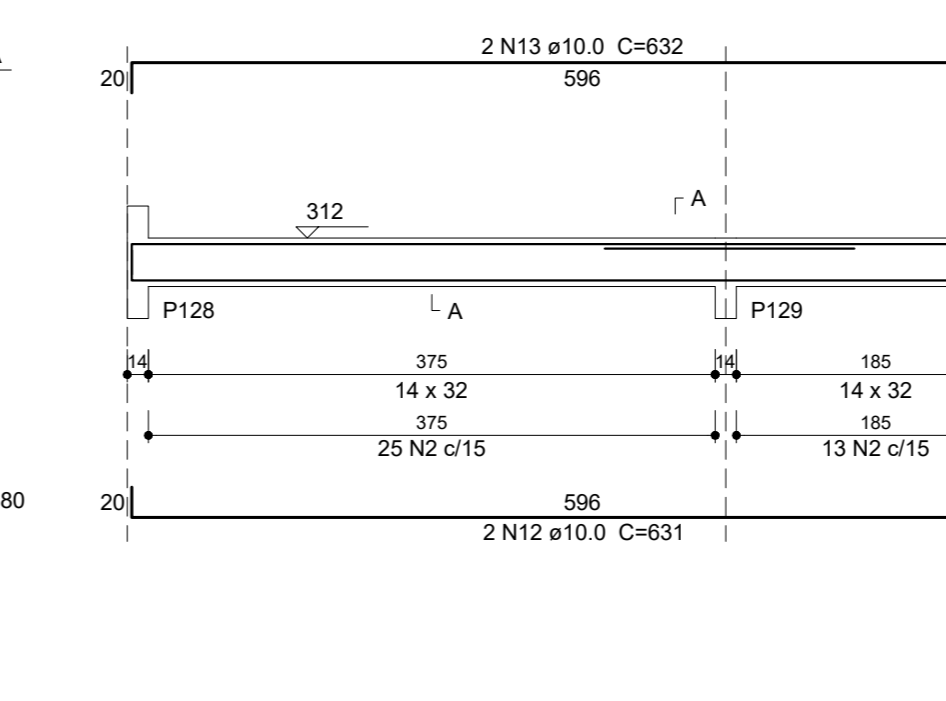
SEÇÃO A-A
ESC 1:25

V23 (14 x 32)
ESC 1:50



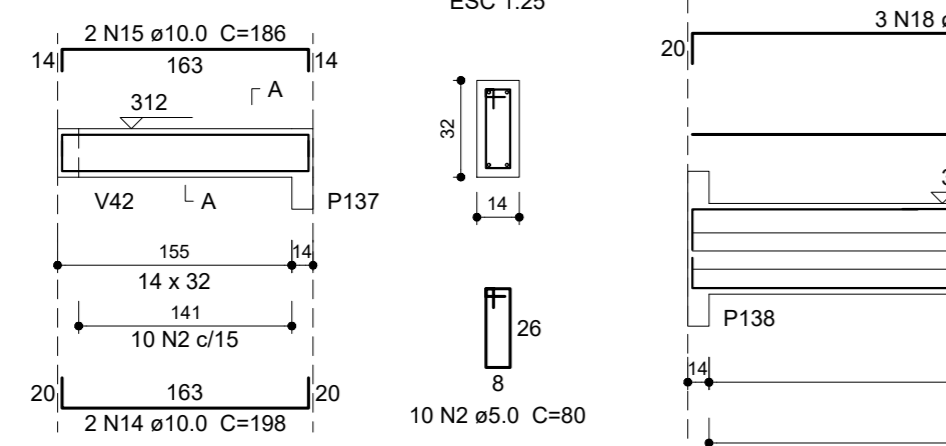
SEÇÃO A-A
ESC 1:25

V24 (14 x 32)
ESC 1:50



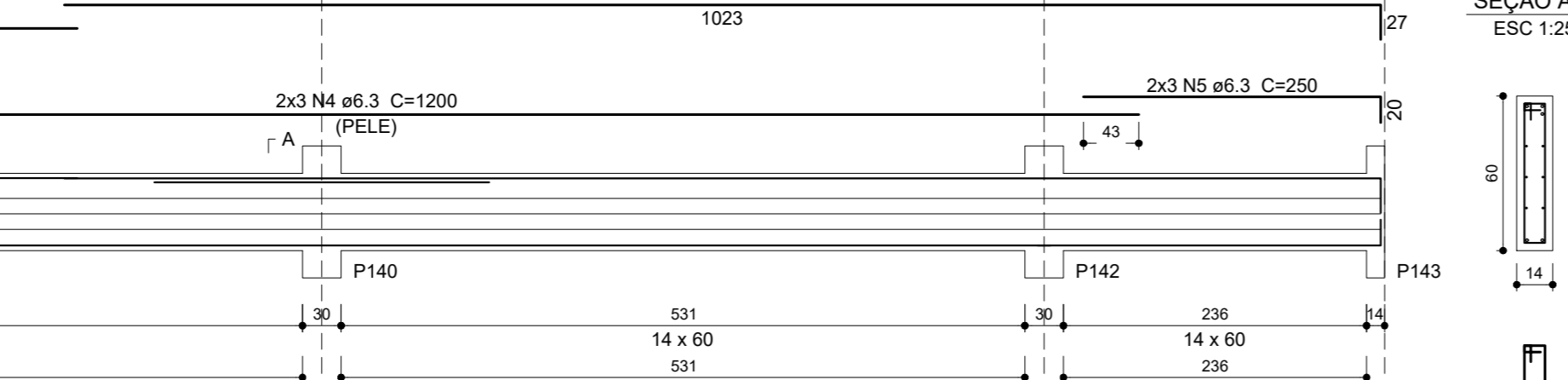
SEÇÃO A-A
ESC 1:25

V25 (14 x 32)
ESC 1:50



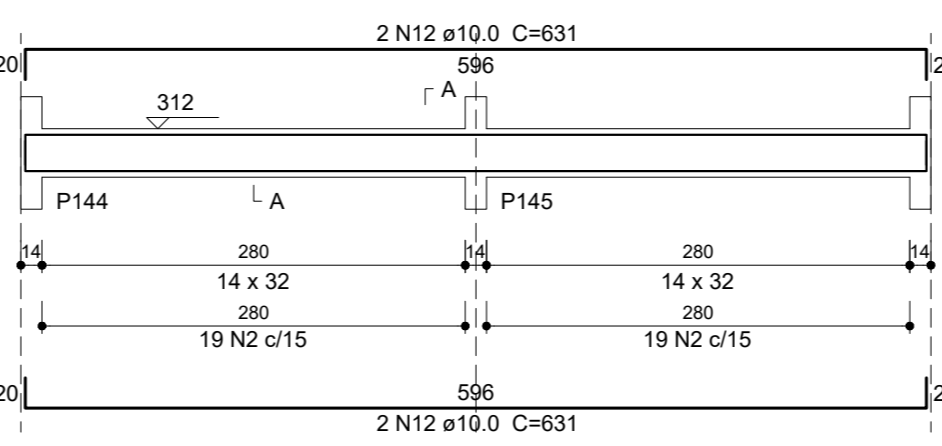
SEÇÃO A-A
ESC 1:25

V26 (14 x 60)
ESC 1:50



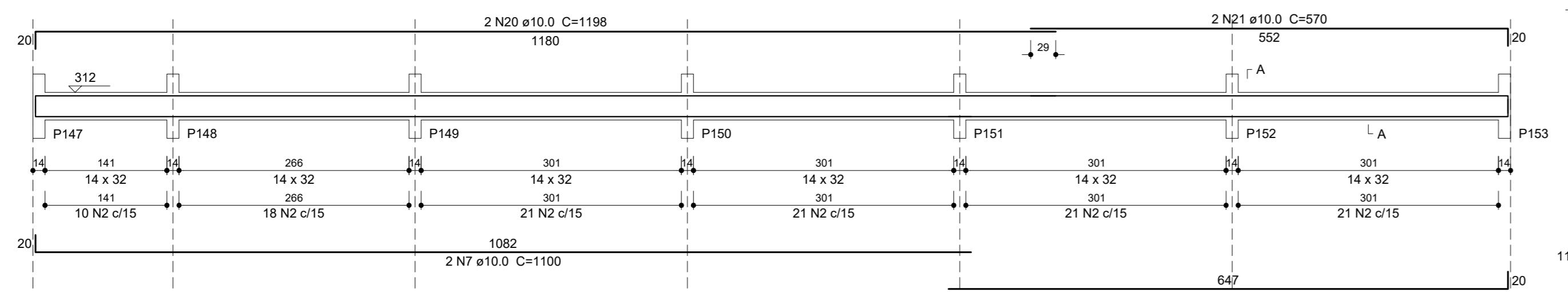
SEÇÃO A-A
ESC 1:25

V27 (14 x 32)
ESC 1:50



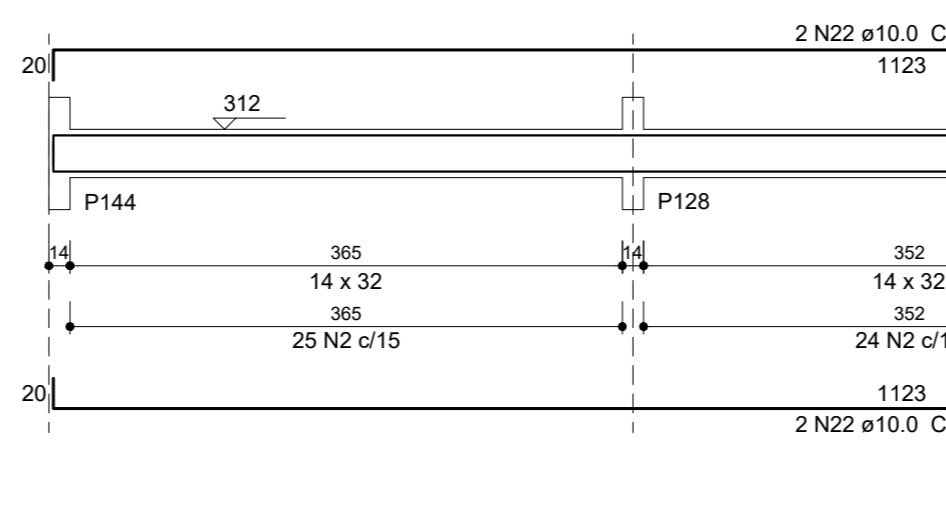
SEÇÃO A-A
ESC 1:25

V28 (14 x 32)
ESC 1:50



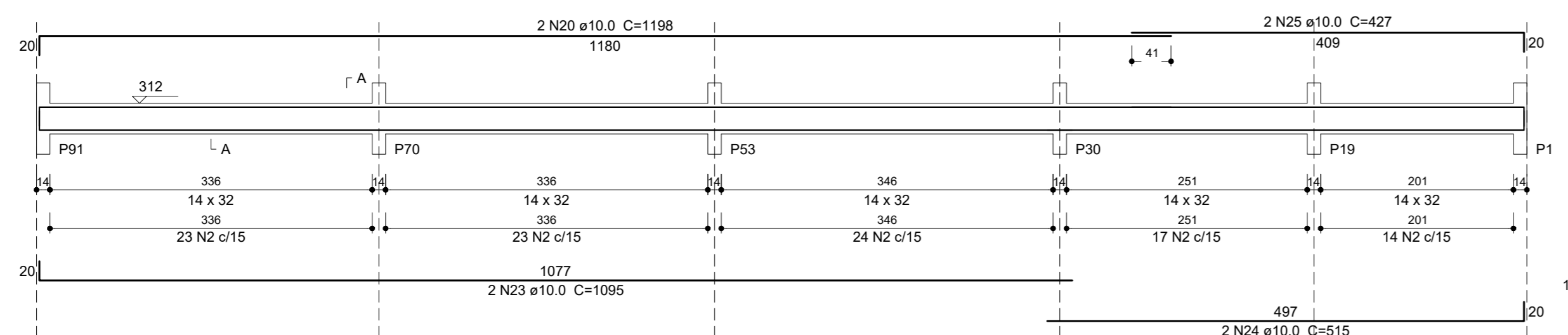
SEÇÃO A-A
ESC 1:25

V29 (14 x 32)
ESC 1:50



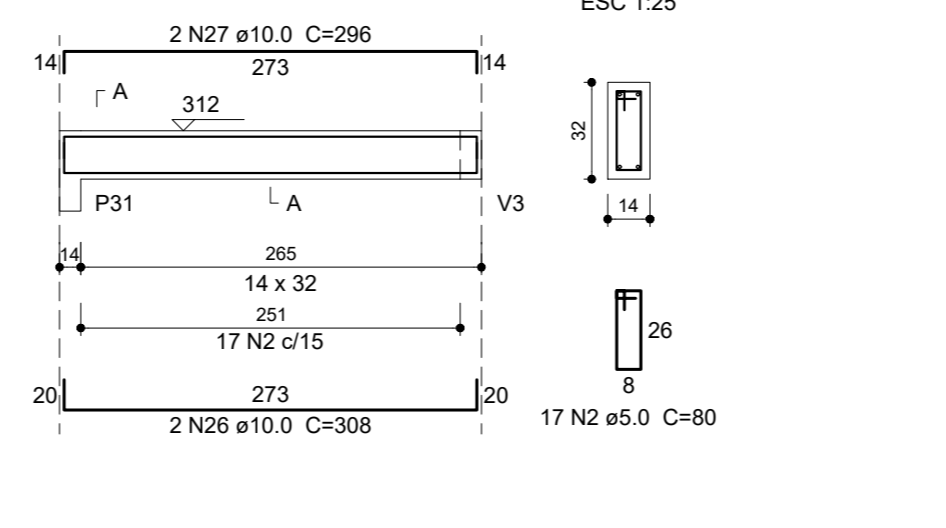
SEÇÃO A-A
ESC 1:25

V30 (14 x 32)
ESC 1:50



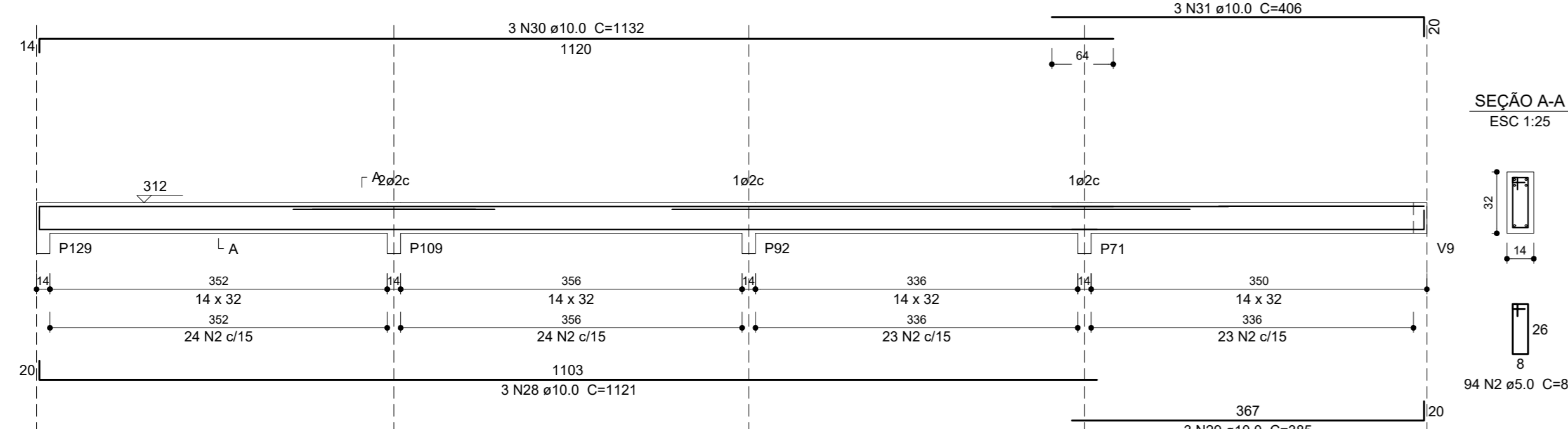
SEÇÃO A-A
ESC 1:25

V31 (14 x 32)
ESC 1:50



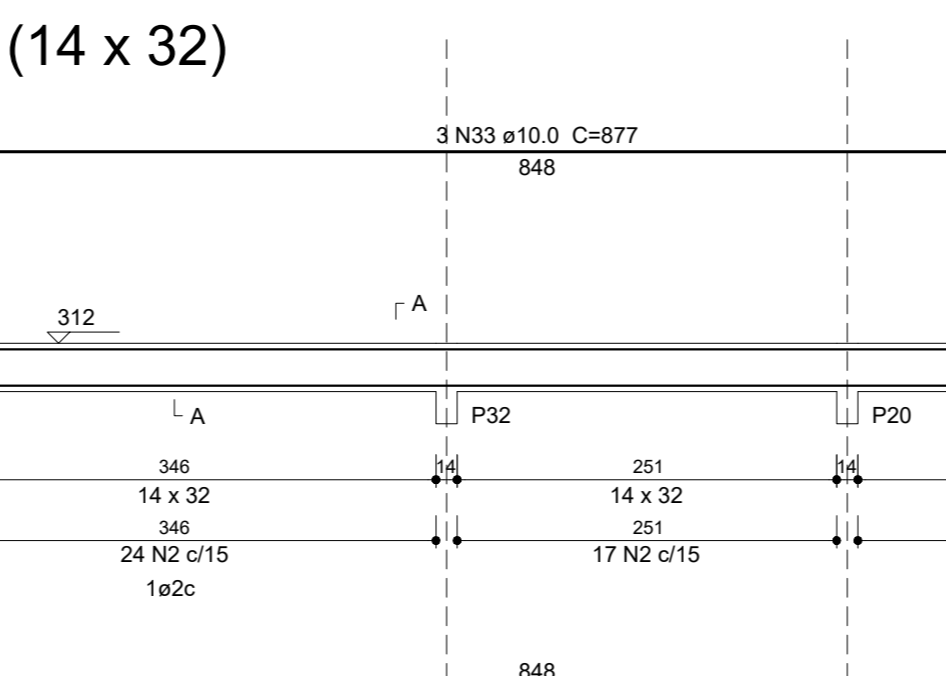
SEÇÃO A-A
ESC 1:25

V32 (14 x 32)
ESC 1:50



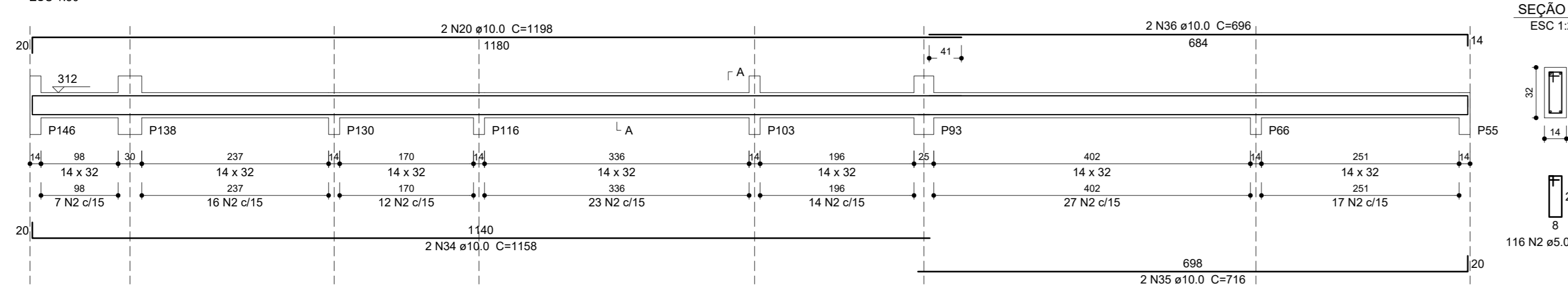
SEÇÃO A-A
ESC 1:25

V33 (14 x 32)
ESC 1:50



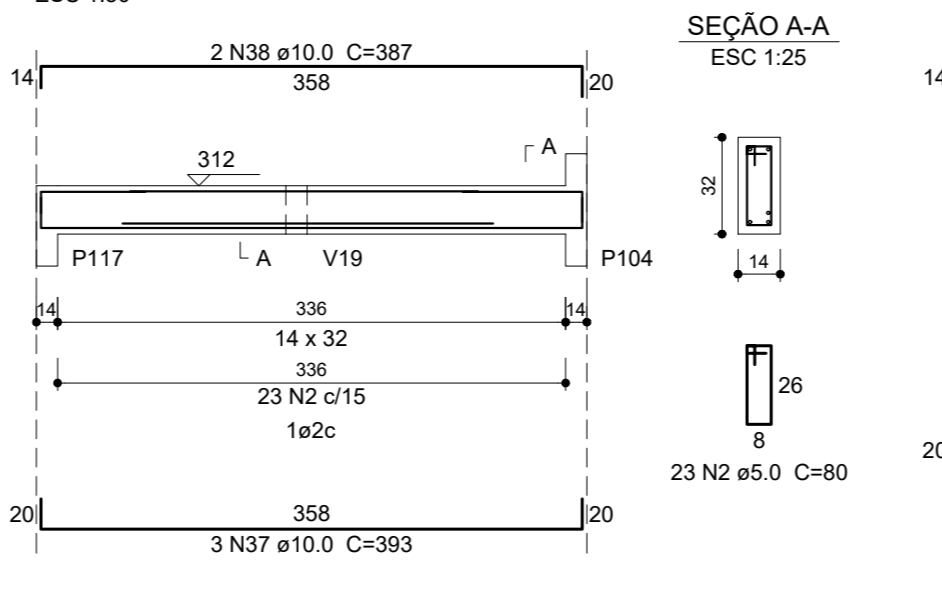
SEÇÃO A-A
ESC 1:25

V34 (14 x 32)
ESC 1:50



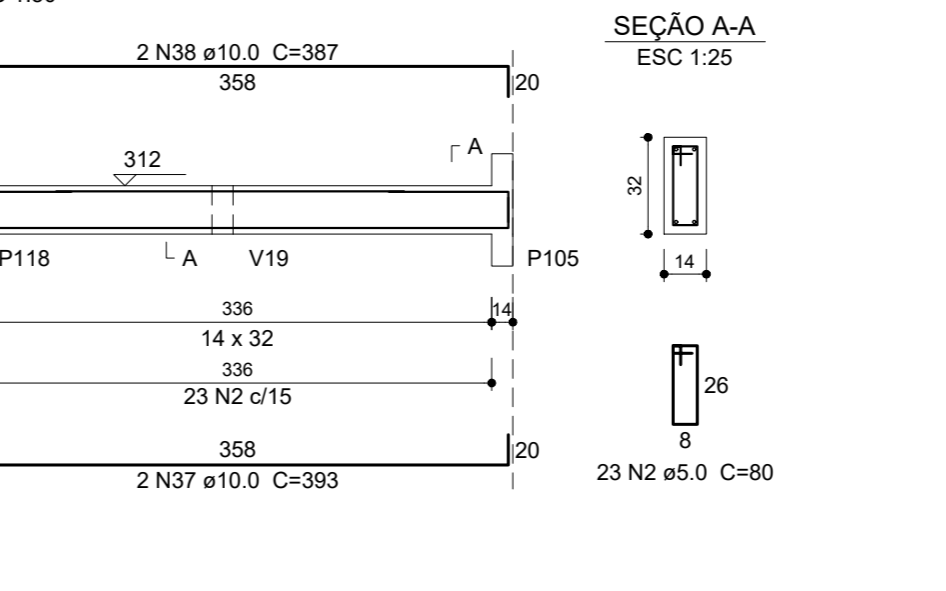
SEÇÃO A-A
ESC 1:25

V35 (14 x 32)
ESC 1:50



SEÇÃO A-A
ESC 1:25

V36 (14 x 32)
ESC 1:50



SEÇÃO A-A
ESC 1:25

Características dos materiais (CONCRETO)				Legenda	
Elemento	f _{ck} (MPa)	f _{ctd} (MPa)	Agregado	▀	Pilar que morre
Estacas	25	241500	Brita 1	▣	Pilar que passa
Bloco	30	268384	Brita 1	▤	Pilar que nasce
Vigas	30	268384	Brita 1	▥	Viga
Placas	30	268384	Brita 1	▦	Viga chata ou invertida
				→	Direção lajes pré PROTENDIDAS

CARGAS ACIDENTAIS NAS LAJES	
Forro = 100 Kg/m ²	
4	
3	
2	
1	
0	
1	
2	
3	
4	

Assunto:	Vigas do Forro (2)	Observações:
Arquiteta:	Pedro Luiz Traidi - CAU 134056-5	
Local:	R.: JOSÉ SILVESTRE DE CARVALHO s/n - VILA BANCÁRIA - LEME/SP	
Escala:	1:25 e 1:50	Data: 04/jul/2022

Projeto:	CENTRO DE TRATAMENTO AO AUTISMO	Auto:	E-10
Proprietário:	PREFEITURA MUNICIPAL DE LEME Secretaria de Obras e Planejamento Urbano		