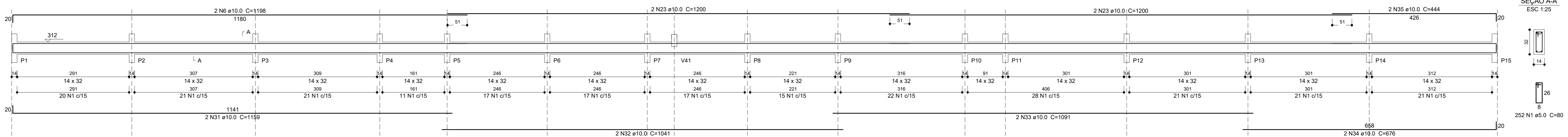
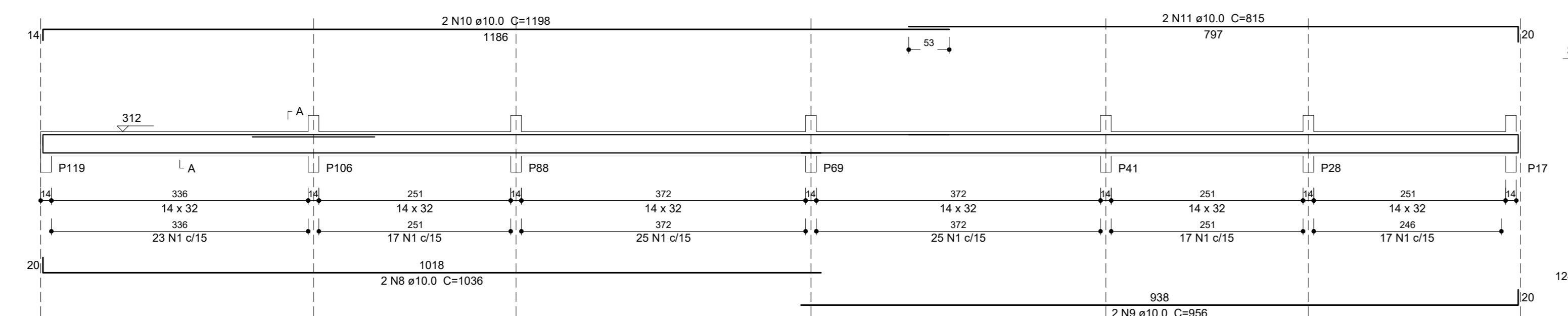


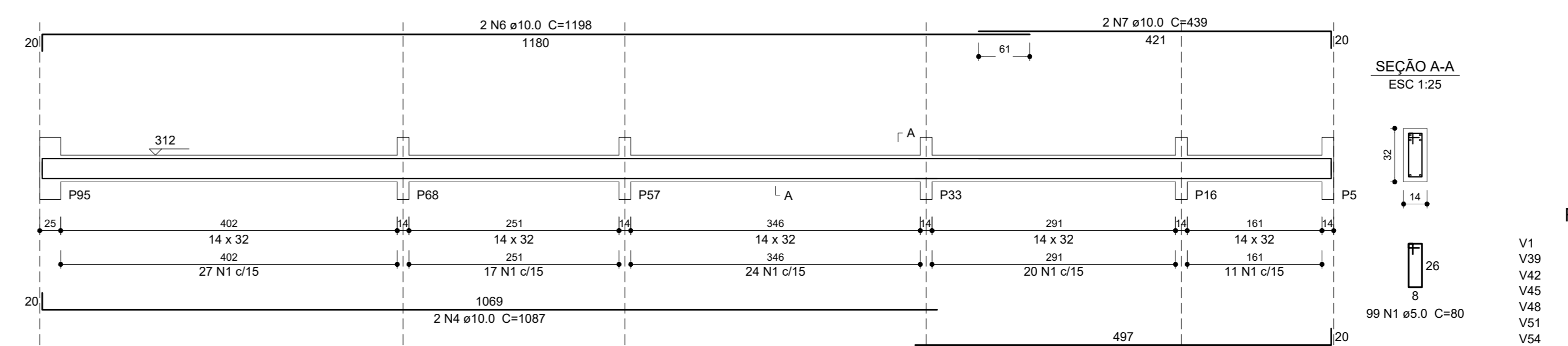
V1 (14 x 32)
ESC 1:50



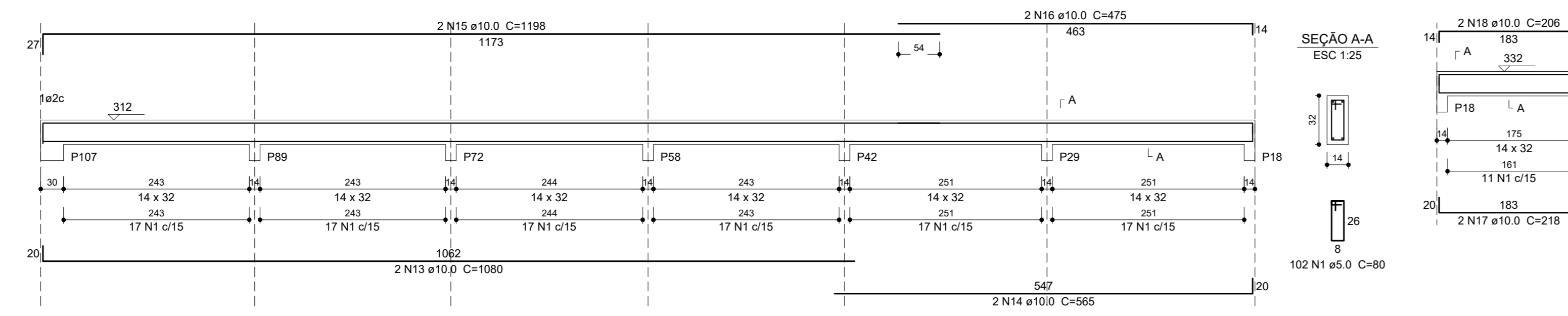
V38 (14 x 32)
ESC 1:50



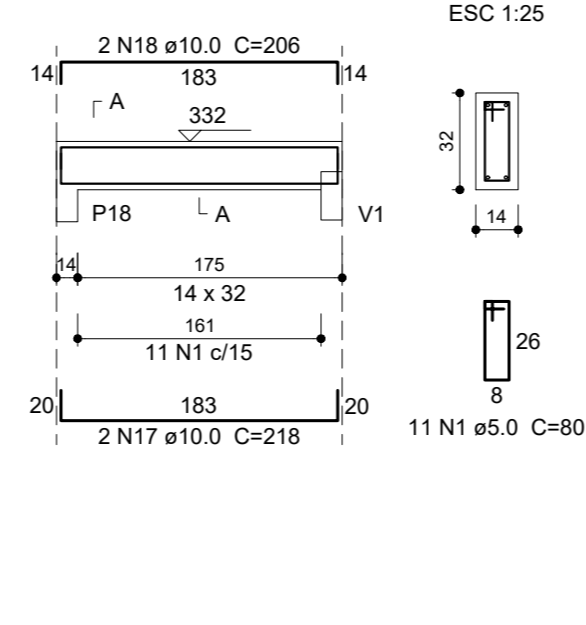
V37 (14 x 32)
ESC 1:50



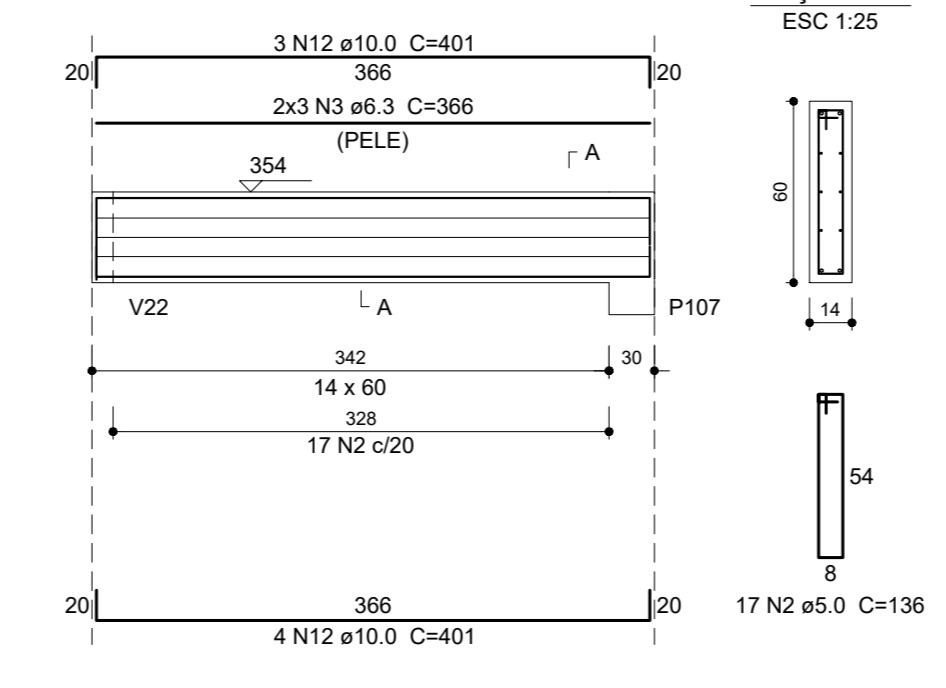
V40 (14 x 32)
ESC 1:50



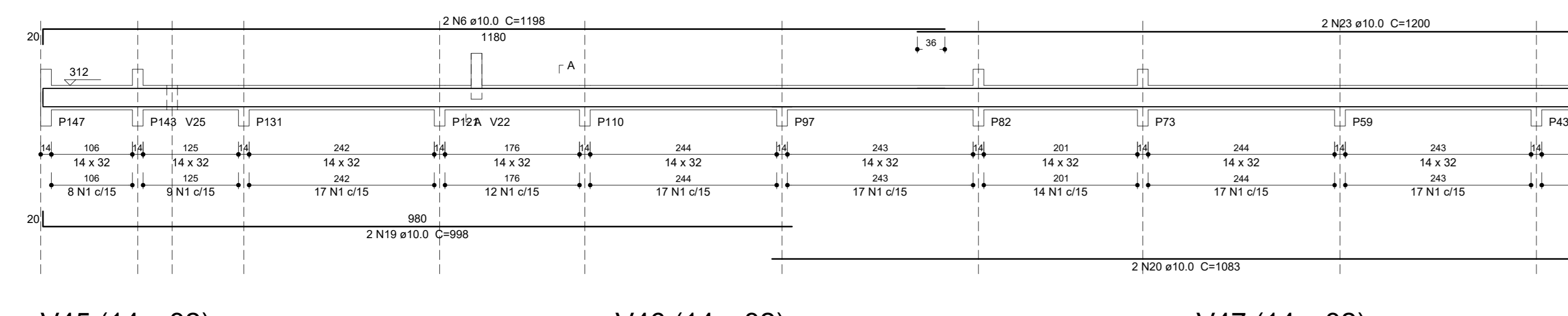
V41 (14 x 32)
ESC 1:50



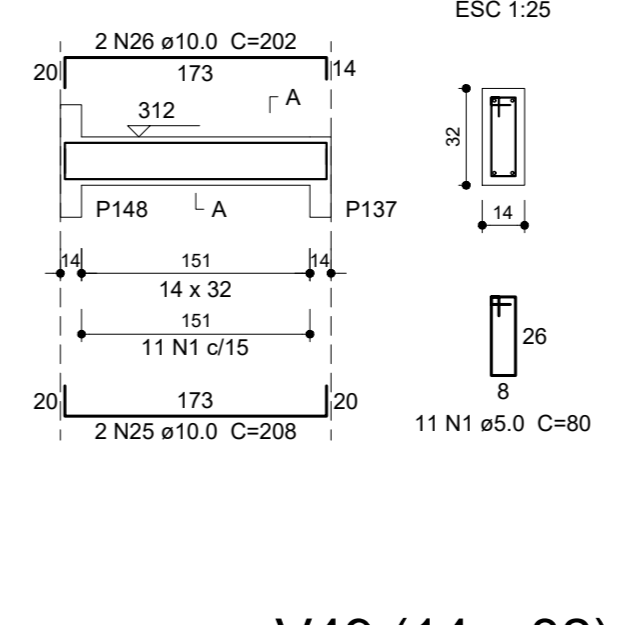
V39 (14 x 60)
ESC 1:50



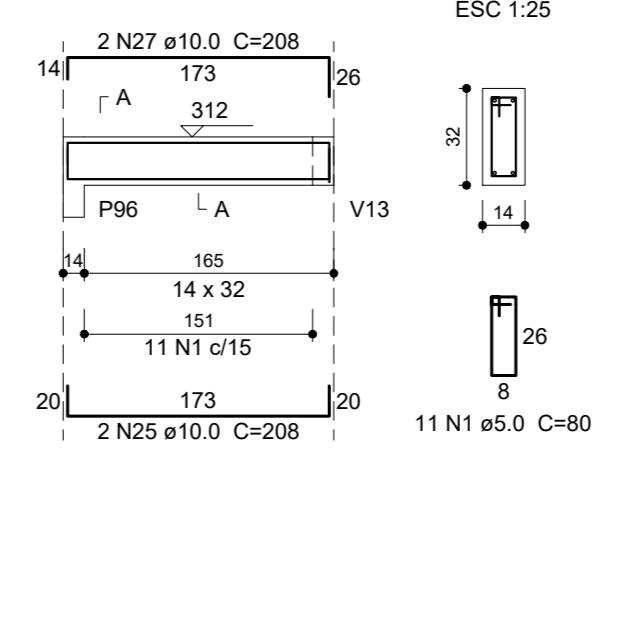
V42 (14 x 32)
ESC 1:50



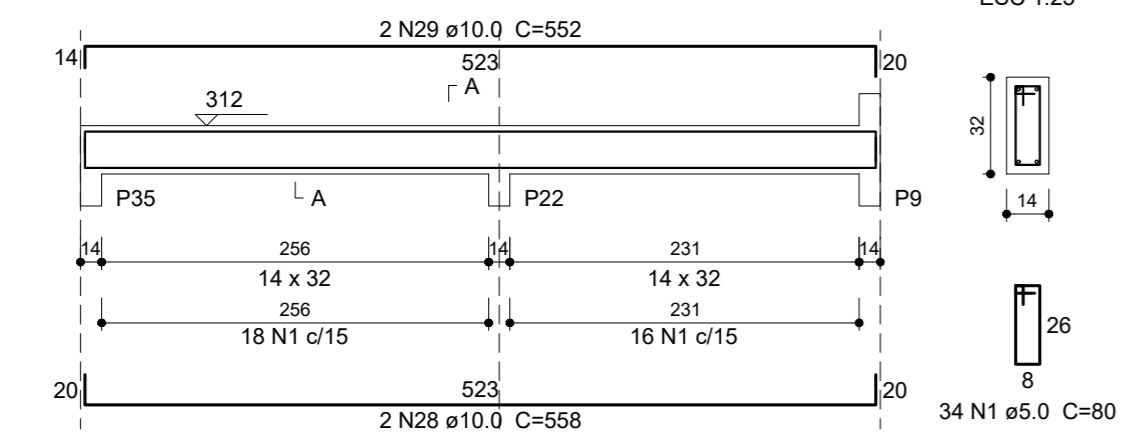
V43 (14 x 32)
ESC 1:50



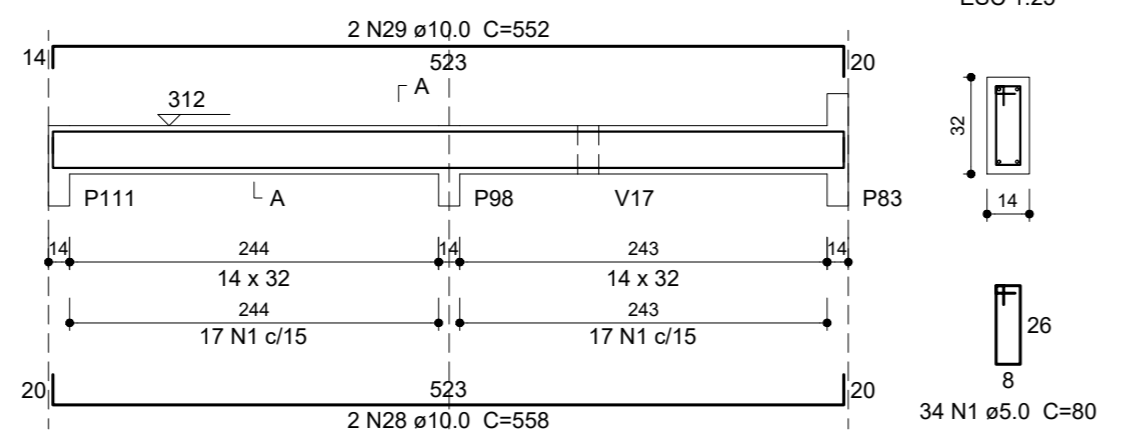
V44 (14 x 32)
ESC 1:50



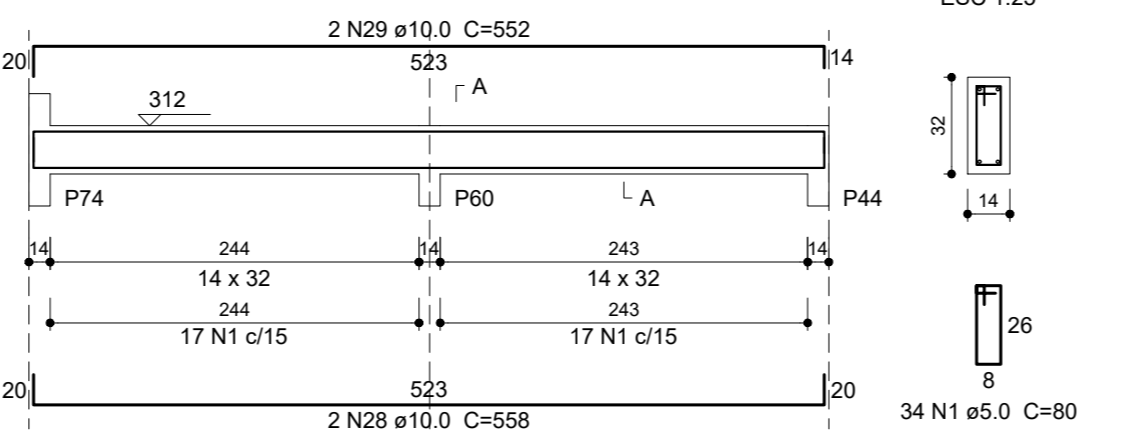
V45 (14 x 32)
ESC 1:50



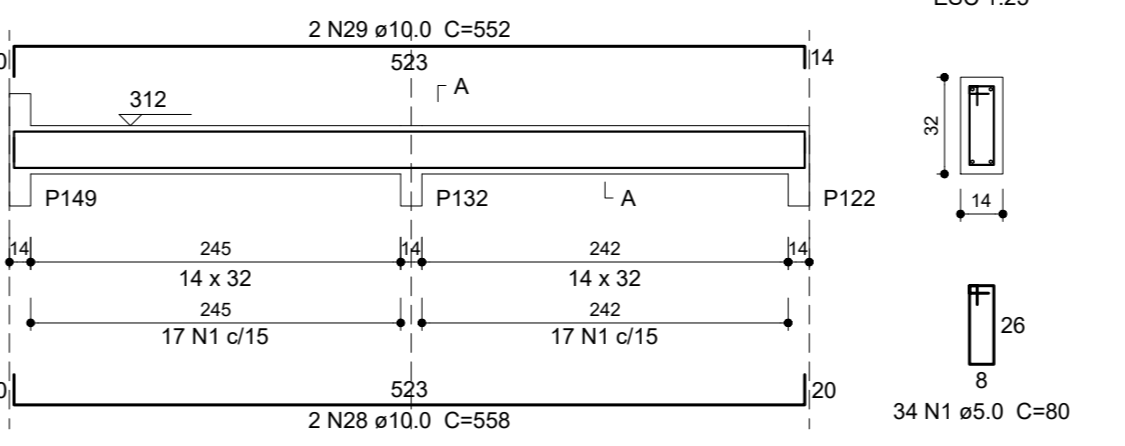
V46 (14 x 32)
ESC 1:50



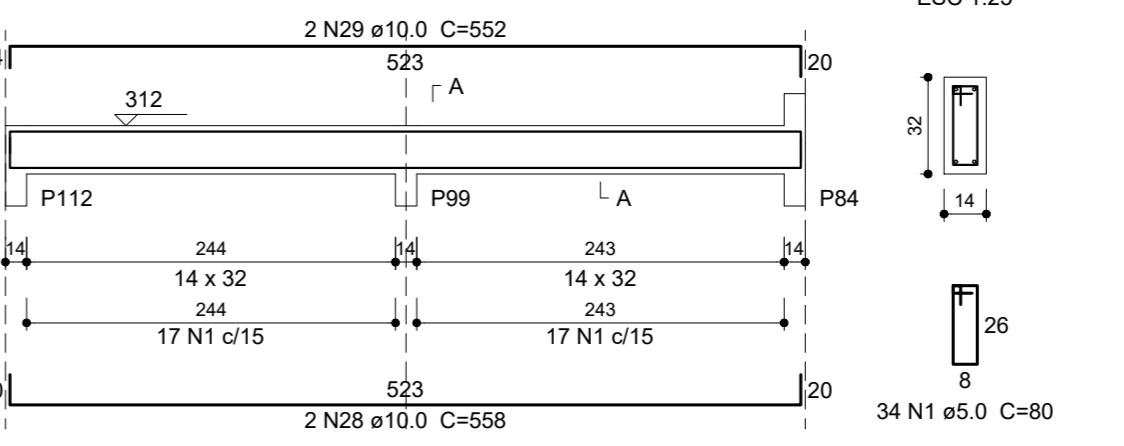
V47 (14 x 32)
ESC 1:50



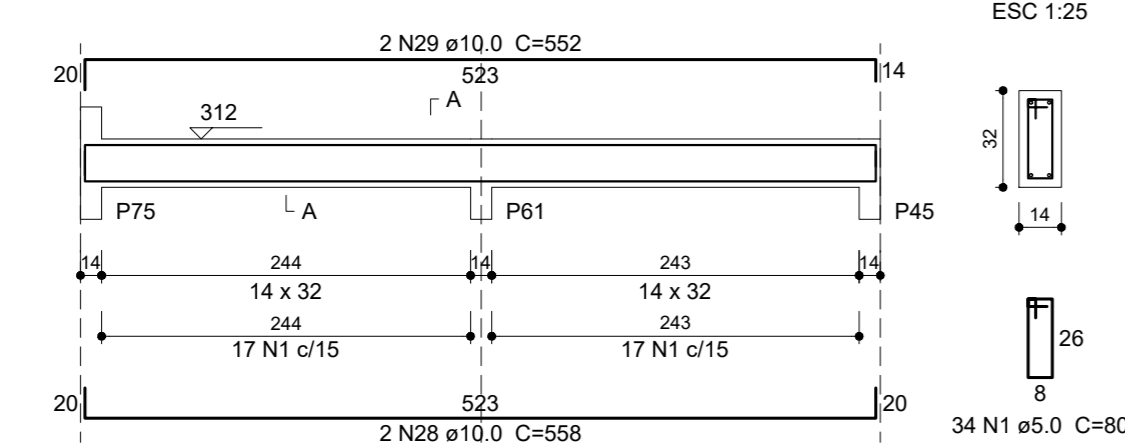
V48 (14 x 32)
ESC 1:50



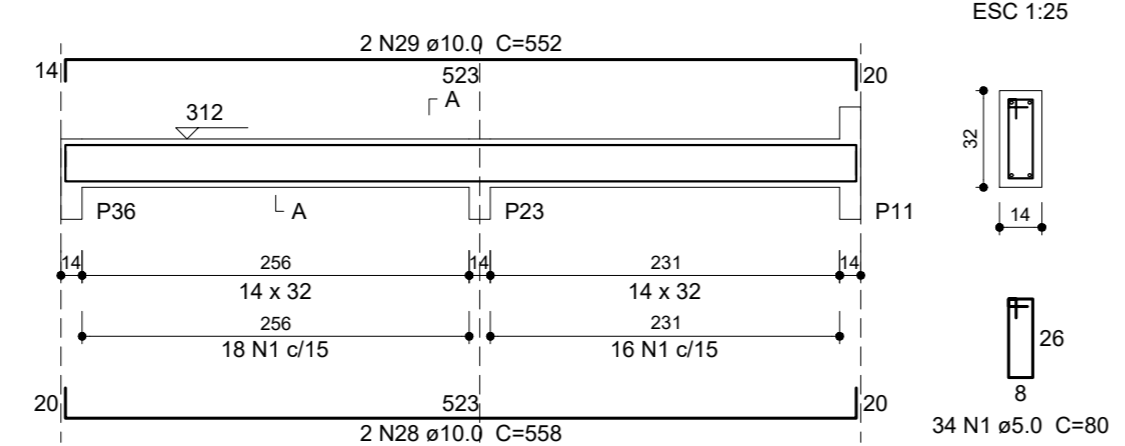
V49 (14 x 32)
ESC 1:50



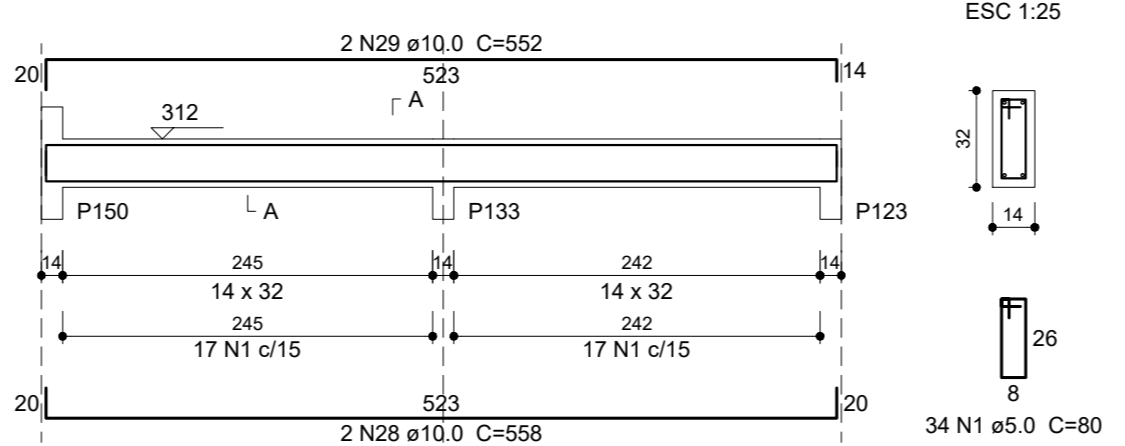
V50 (14 x 32)
ESC 1:50



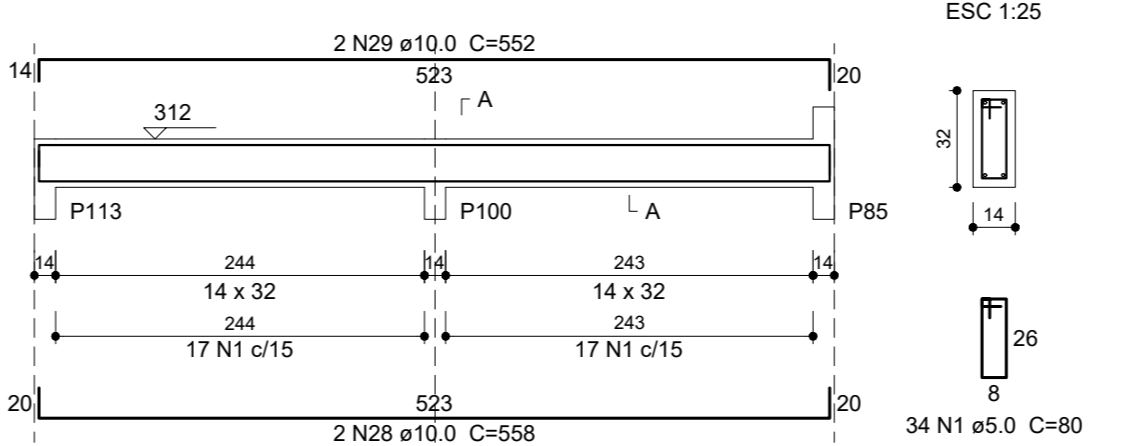
V51 (14 x 32)
ESC 1:50



V52 (14 x 32)
ESC 1:50



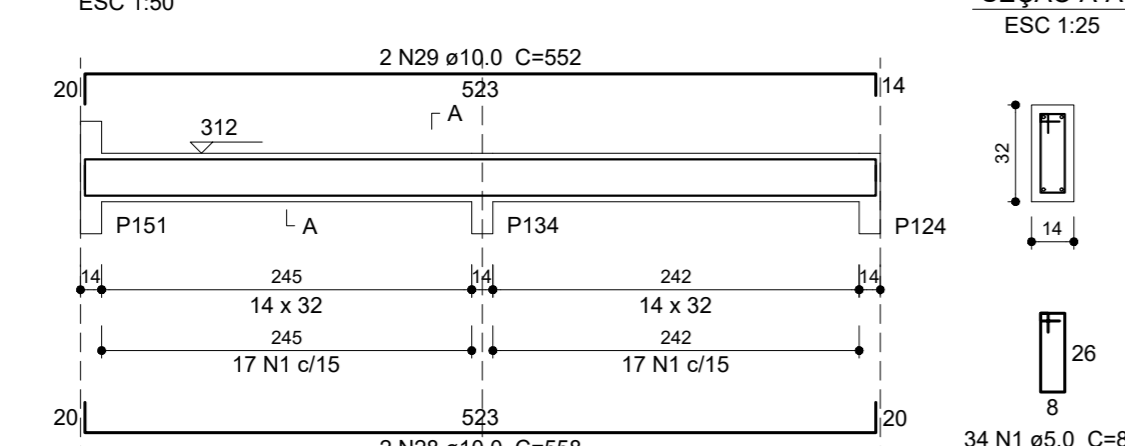
V53 (14 x 32)
ESC 1:50



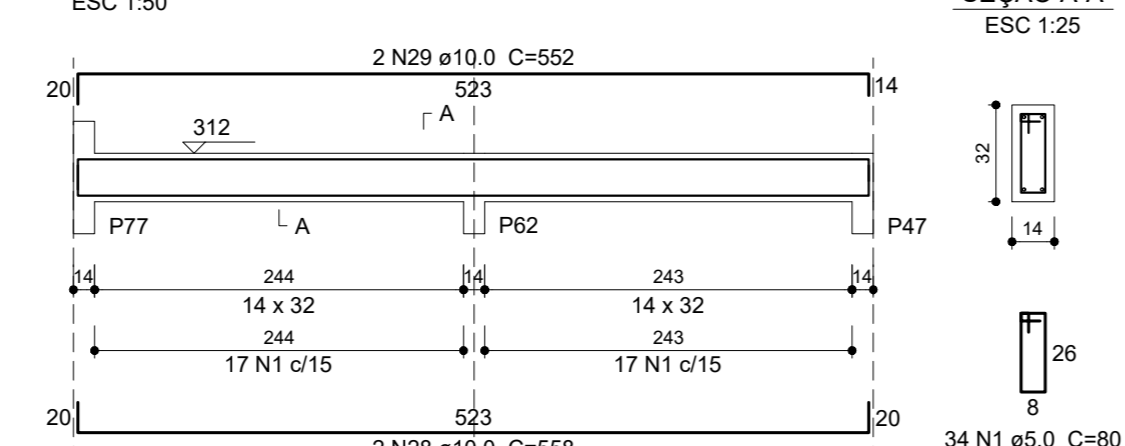
V54 (14 x 32)
ESC 1:50



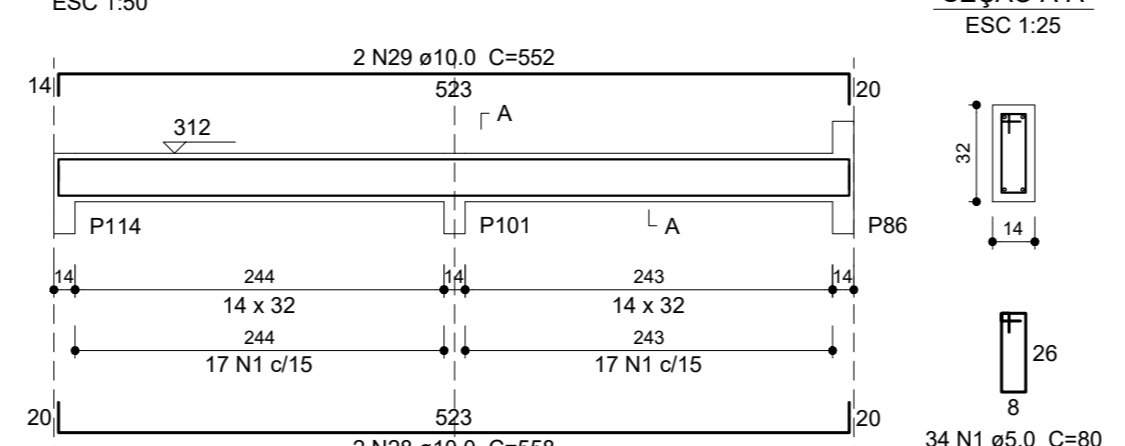
V55 (14 x 32)
ESC 1:50



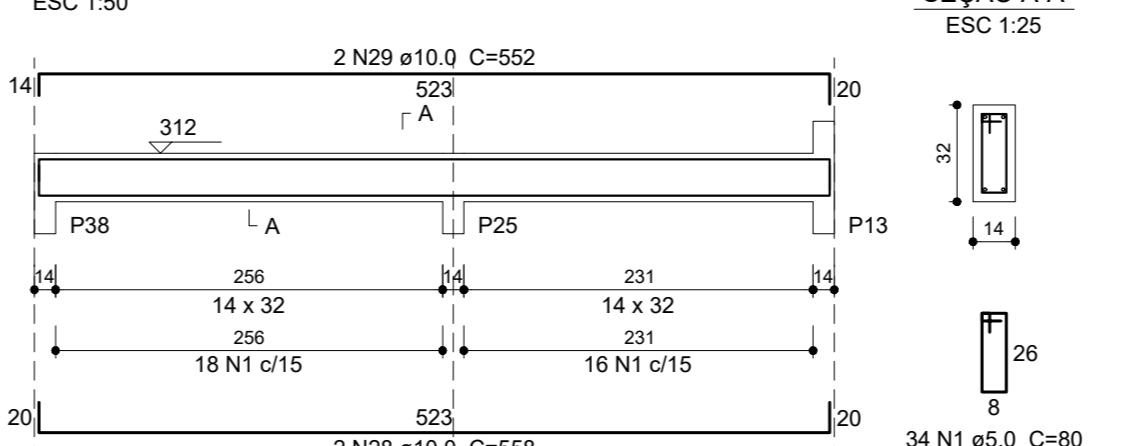
V56 (14 x 32)
ESC 1:50



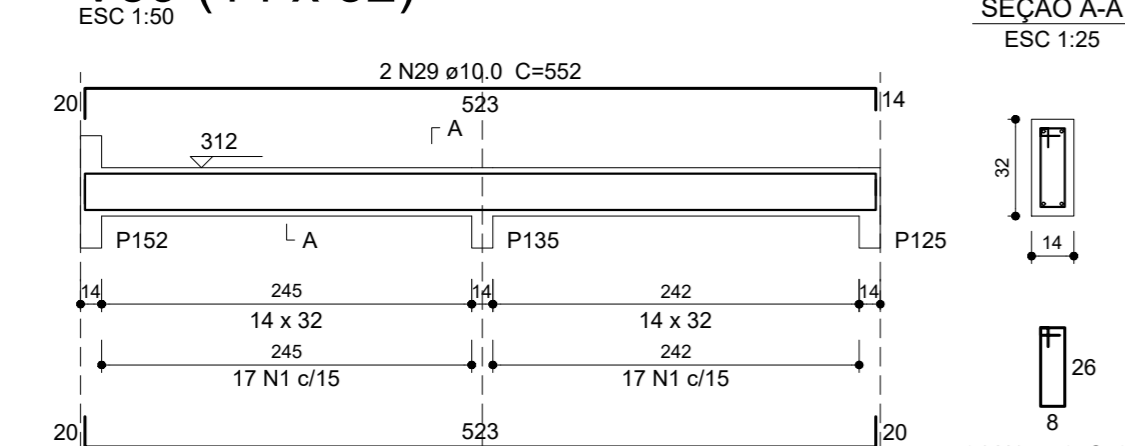
V57 (14 x 32)
ESC 1:50



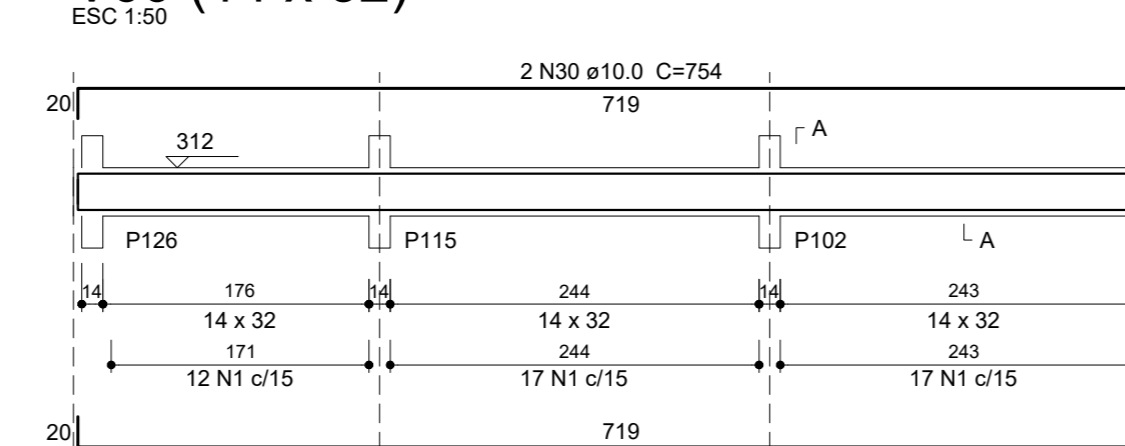
V58 (14 x 32)
ESC 1:50



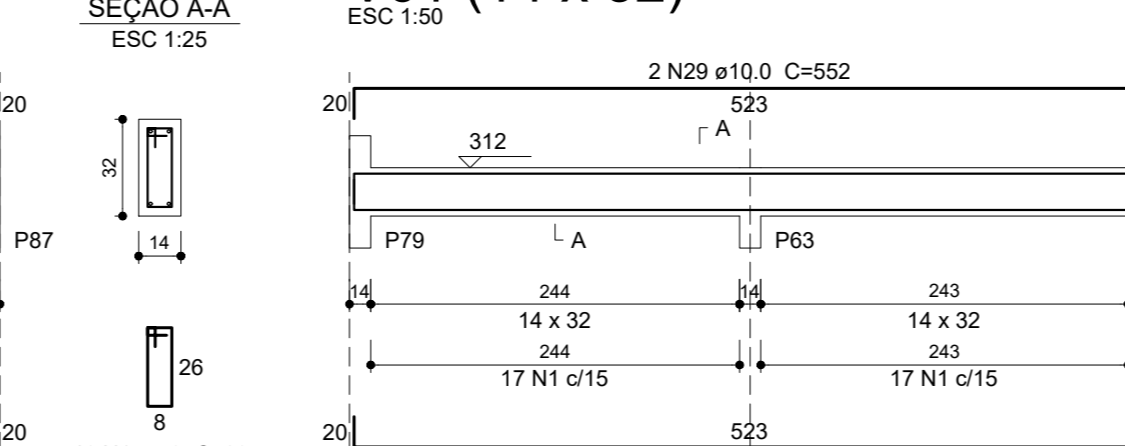
V59 (14 x 32)
ESC 1:50



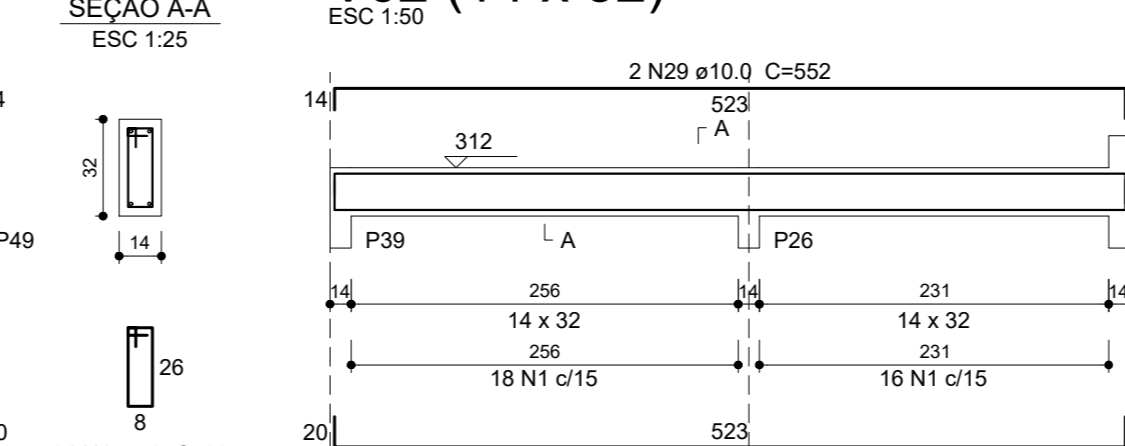
V60 (14 x 32)
ESC 1:50



V61 (14 x 32)
ESC 1:50



V62 (14 x 32)
ESC 1:50



Relação do aço - FORRO (3)

AÇO	N	DIAM (mm)	QUANT	C.UNIT (cm)	C.TOTAL (cm)
CA50	1	5.0	1408	80	112640
	2	5.0	17	138	2312
	3	6.3	6	366	2196
	4	10.0	2	1067	2174
	5	10.0	2	615	1030
	6	10.0	6	1198	7188
	7	10.0	2	439	878
	8	10.0	2	1036	2072
	9	10.0	2	956	1912
	10	10.0	2	1168	2336
	11	10.0	2	815	1630
	12	10.0	7	401	2807
	13	10.0	2	1060	2160
	14	10.0	2	565	1130
	15	10.0	2	1168	2336
	16	10.0	2	475	950
	17	10.0	2	218	436
	18	10.0	2	208	412
	19	10.0	2	998	1996
	20	10.0	2	1063	2126
	21	10.0	2	149	298
	22	10.0	4	208	832
	23	10.0	6	1200	7200
	24	10.0	2	373	746
	25	10.0	4	208	832
	26	10.0	2	202	404
	27	10.0	2	208	416
	28	10.0	34	558	18972
	29	10.0	34	552	18768
	30	10.0	4	754	3016
	31	10.0	2	1159	2318
	32	10.0	2	1041	2082
	33	10.0	2	1091	2182
	34	10.0	2	676	1352
	35	10.0	2	444	888

Resumo do aço

AÇO	DIAM (mm)	C.TOTAL (cm)	PESO + 10% (kg)
CA50	6.3	22	349
CA50	5.0	1149.6	636.9
PESO TOTAL (kg)			986.9

Elemento	Ita (m³)	Ecs (kg/cm³)	Agregado
Estacas	25	241500	Brita 1
Bloco	30	268384	Brita 1
Vigas	30	268384	Brita 1
Placas	30	268384	Brita 1

Pilar que morre
 Pilar que nasce
 Viga
 Viga chata ou invertida
 Direção lajes pré PROTENDIDAS

CARDEAS ACIDENTAIS NAS LAJES
 For = 100 Kg/m²

Elemento: data por Observações

AJC ENGENHARIA SC LTDA
 R. Sérgio Antunes, 550 - 13.612-332 - LEME, SP
 adilson.carvalho100@gmail.com (19) 99128 6863

Obra: **CENTRO DE TRATAMENTO AO AUTISMO**
 Proprietário: **PREFEITURA MUNICIPAL DE LEME**
 Secretária de Obras e Planejamento Urbano
 Assunto: **Vigas do Forro (3)**
 Arquiteta: **Pedro Luiz Traidi - CAU 134056-5**
 Local: **R. JOSÉ SILVESTRE DE CARVALHO s/n - VILA BANCÁRIA - LEME/SP**
 Escala: **1:25 e 1:50** Data: **04/jul/2022** Visto: